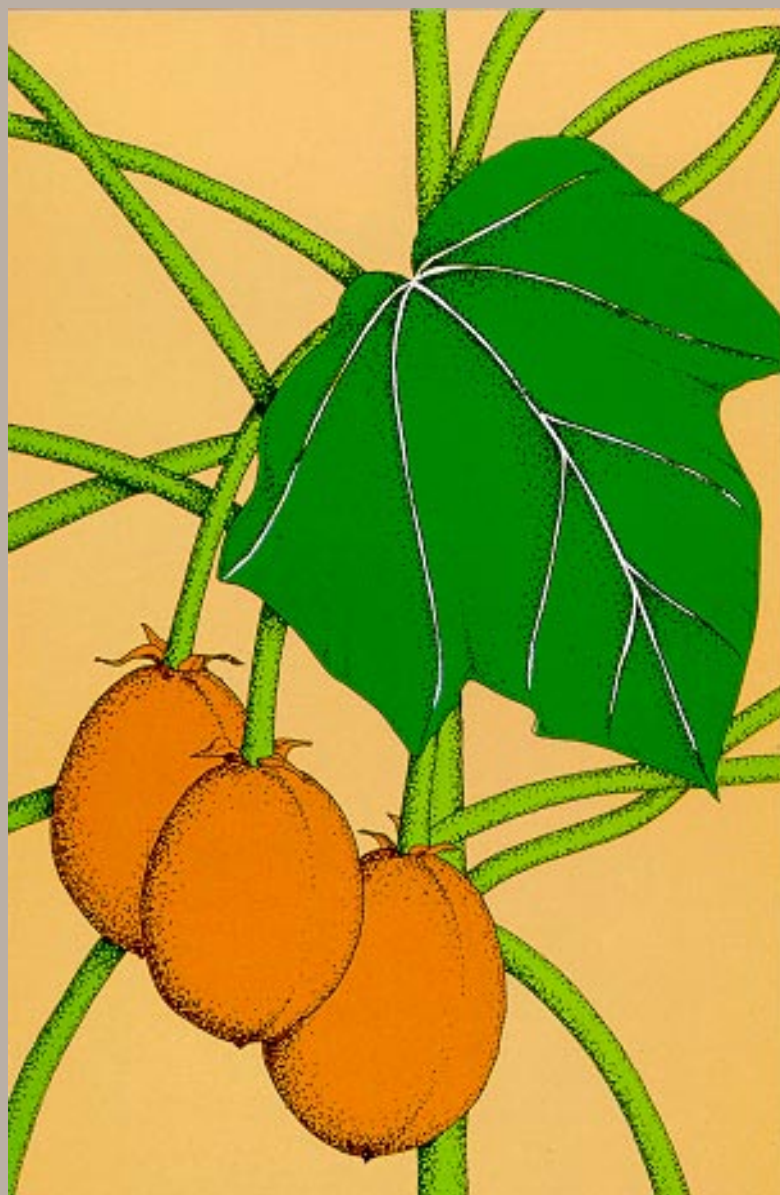


Physic nut

Jatropha curcas L.

Joachim Heller



The International Plant Genetic Resources Institute (IPGRI) is an autonomous international scientific organization operating under the aegis of the Consultative Group on International Agricultural Research (CGIAR). The international status of IPGRI is conferred under an Establishment Agreement which, by December 1995, had been signed by the Governments of Australia, Belgium, Benin, Bolivia, Burkina Faso, Cameroon, China, Chile, Congo, Costa Rica, Côte d'Ivoire, Cyprus, Czech Republic, Denmark, Ecuador, Egypt, Greece, Guinea, Hungary, India, Iran, Israel, Italy, Jordan, Kenya, Mauritania, Morocco, Pakistan, Panama, Peru, Poland, Portugal, Romania, Russia, Senegal, Slovak Republic, Sudan, Switzerland, Syria, Tunisia, Turkey, Ukraine and Uganda. IPGRI's mandate is to advance the conservation and use of plant genetic resources for the benefit of present and future generations. IPGRI works in partnership with other organizations, undertaking research, training and the provision of scientific and technical advice and information, and has a particularly strong programme link with the Food and Agriculture Organization of the United Nations. Financial support for the agreed research agenda of IPGRI is provided by the Governments of Australia, Austria, Belgium, Canada, China, Denmark, France, Germany, India, Italy, Japan, the Republic of Korea, Mexico, the Netherlands, Norway, Spain, Sweden, Switzerland, the UK and the USA, and by the Asian Development Bank, IDRC, UNDP and the World Bank.

The Institute of Plant Genetics and Crop Plant Research (IPK) is operated as an independent foundation under public law. The foundation statute assigns to IPK the task of conducting basic research in the area of plant genetics and research on cultivated plants.

The geographical designations employed and the presentation of material in this publication do not imply the expression of any opinion whatsoever on the part of IPGRI, the CGIAR or IPK concerning the legal status of any country, territory, city or area or its authorities, or concerning the delimitation of its frontiers or boundaries. Similarly, the views expressed are those of the authors and do not necessarily reflect the views of these participating organizations.

Citation:

Heller, Joachim. 1996. Physic nut. *Jatropha curcas* L. Promoting the conservation and use of underutilized and neglected crops. 1. Institute of Plant Genetics and Crop Plant Research, Gatersleben/ International Plant Genetic Resources Institute, Rome.

ISBN 92-9043-278-0

IPGRI
Via delle Sette Chiese 142
00145 Rome
Italy

IPK
Corrensstraße 3
06466 Gatersleben
Germany

© International Plant Genetic Resources Institute, 1996

Contents

Acknowledgements	4
Foreword	5
1. Introduction	6
2. Names of the species and taxonomy	7
3. Botanical description	10
4. Origin and centre of diversity	13
5. Properties	16
Toxicology	16
6. Uses	18
Whole plant and food/fodder	18
Medicine	18
Plant protectant and molluscicide	19
Technical uses	20
Diesel fuel	21
Other uses	23
7. Genetic resources	25
Existing genetic variation	25
Conservation of physic nut	30
8. Breeding	32
Breeding objectives	32
Breeding method	32
Selection based on provenance trials	33
9. Production areas	34
10. Ecology	35
11. Agronomy	36
Growth and development	36
Propagation methods	37
Pests and diseases	41
12. Limitations of the crop	42
13. Prospects	43
14. Research needs	44
Bibliography	45
Appendix I. Research contacts, centres of crop research, breeding and plant genetic resources of physic nut	55
Appendix II. Publications of Proyecto Biomasa, DINOT/UNI, Nicaragua	60

Acknowledgements

The information contained in this monograph was partly compiled during the production of my PhD thesis under the supervision of Prof. Dr D. Leihner at the University of Hohenheim, Stuttgart. I am particularly grateful to him and to the Deutsche Gesellschaft für Technische Zusammenarbeit (GTZ) for initiating and financing the research project at that time. I am indebted to all my coworkers at the University of Hohenheim, the GTZ in Senegal and the INIA, Cape Verde, and I wish to acknowledge my appreciation of their support and cooperation, and for all our discussions.

I thank Prof. Bijan Dehgan, Dr Jan Engels, Prof. José Mendes Ferrão, Mr Nikolaus Foidl, Mr Jürgen Gliese, Dr Phil Harris, Mr Reinhard Henning, Dr Norman Jones, Dr Bhag Mal, Mr Stefan Peterlowitz, Prof. Lucia Ramirez, Dr Jozef Turok and Prof. Michael Wink for their critical review of the manuscript.

I thank Prof. B. Dehgan and the Annals of the Missouri Botanical Garden for their permission to reprint Figure 1, and Mr R. Henning for providing several photographs.

Foreword

Humanity relies on a diverse range of cultivated species; at least 6000 such species are used for a variety of purposes. It is often stated that only a few staple crops produce the majority of the food supply. This might be correct but the important contribution of many minor species should not be underestimated. Agricultural research has traditionally focused on these staples, while relatively little attention has been given to minor (or underutilized or neglected) crops, particularly by scientists in developed countries. Such crops have, therefore, generally failed to attract significant research funding. Unlike most staples, many of these neglected species are adapted to various marginal growing conditions such as those of the Andean and Himalayan highlands, arid areas, salt-affected soils, etc. Furthermore, many crops considered neglected at a global level are staples at a national or regional level (e.g. tef, fonio, Andean roots and tubers etc.), contribute considerably to food supply in certain periods (e.g. indigenous fruit trees) or are important for a nutritionally well-balanced diet (e.g. indigenous vegetables). The limited information available on many important and frequently basic aspects of neglected and underutilized crops hinders their development and their sustainable conservation. One major factor hampering this development is that the information available on germplasm is scattered and not readily accessible, i.e. only found in 'grey literature' or written in little-known languages. Moreover, existing knowledge on the genetic potential of neglected crops is limited. This has resulted, frequently, in uncoordinated research efforts for most neglected crops, as well as in inefficient approaches to the conservation of these genetic resources.

This series of monographs intends to draw attention to a number of species which have been neglected in a varying degree by researchers or have been underutilized economically. It is hoped that the information compiled will contribute to: (1) identifying constraints in and possible solutions to the use of the crops, (2) identifying possible untapped genetic diversity for breeding and crop improvement programmes and (3) detecting existing gaps in available conservation and use approaches. This series intends to contribute to improvement of the potential value of these crops through increased use of the available genetic diversity. In addition, it is hoped that the monographs in the series will form a valuable reference source for all those scientists involved in conservation, research, improvement and promotion of these crops.

This series is the result of a joint project between the International Plant Genetic Resources Institute (IPGRI) and the Institute of Plant Genetics and Crop Plant Research (IPK). Financial support provided by the Federal Ministry of Economic Cooperation and Development (BMZ) of Germany through the German Agency for Technical Cooperation (GTZ) is duly acknowledged.

Series editors:

Dr Joachim Heller, Institute of Plant Genetics and Crop Plant Research (IPK)

Dr Jan Engels, International Plant Genetic Resources Institute (IPGRI)

Prof. Dr Karl Hammer, Institute of Plant Genetics and Crop Plant Research (IPK)

1. Introduction

The use of trees and shrubs in arid and semi-arid regions is of vital importance for the human population in developing countries (Ben Salem and Palmberg 1985). The exhaustive exploitation of these resources in conjunction with droughts, especially in the Sahel, has caused an alarming reduction in tree cover. This has resulted in increased desertification, soil erosion caused by wind and water, and droughts and floods as well as reduced water supply and decreasing soil fertility. Trees also play an important role in the CO₂ cycle of the earth as they assimilate carbon dioxide.

Traditionally, shrubs (and trees) serve many purposes. Le Hou  rou (1989) distinguished 13 groups according to how they are used:

1. food and drink for humans
2. browse for livestock and wildlife
3. beekeeping and honey production
4. source of energy – firewood and charcoal
5. building and fencing material
6. fibre for cloth, rope and handicrafts
7. tools for agriculture and cottage industry
8. handicraft, art and religious objects
9. dye and tanning
10. drugs, medicinal and veterinary uses
11. shade and shelter for plants, animals and humans ('palaver' trees)
12. protection against erosion, maintenance of soil fertility and productivity
13. water storage.

Attempts are now being made to promote the cultivation of crops previously grown only regionally or to a low extent. Comprehensive surveys exist, especially of crops which adapt well to arid and semi-arid conditions (Davis *et al.* 1983; Weiss 1989). In order to identify interesting plant species, not only for use as raw material in industry but also as an energy source, a number of comprehensive surveys have been carried out in the United States of America (Nielsen *et al.* 1977; Buchanan *et al.* 1978; Wang and Hufman 1981; McLaughlin and Hoffmann 1982; Carr *et al.* 1985).

Plant species which can be processed to provide a diesel fuel substitute have captured the interest of scientists more in temperate than in tropical zones. In this plant category, the following properties of the tropical physic nut (*Jatropha curcas* L., Euphorbiaceae) have won over the interest of various development agencies: it adapts well to semi-arid marginal sites, its oil can be processed for use as a diesel fuel substitute and it can be used for erosion control. Although the physic nut is of Mexican and Central American origin, it is cultivated in many other Latin American, Asian and African countries as a hedge and it was an important export product from the Cape Verde Islands during the first half of this century. The aim of this monograph is to make information more easily available to those interested in the potential uses and the genetic resources of the physic nut.

2. Names of the species and taxonomy

The Euphorbiaceae family comprises approximately 8000 species, belonging to 321 genera. According to Leon (1987), Mabberley (1987) and Rehm and Espig (1991), crops of economic importance in this large family are:

- roots cassava (*Manihot esculenta*)
- rubber Hevea (*Hevea brasiliensis*)
- fruits emblic, Otaheite gooseberry (*Phyllanthus* spp.), tjoopa, rambai, mafai (*Baccaurea* spp.), Chinese laurel (*Antidesma bunius*), *Ricinodendron* spp.
- nuts tacay (*Caryodendron orinocense*)
- vegetables katuk (*Sauropus androgynus*), chaya (*Cnidoscolus chayamansa*)
- oil castor (*Ricinus communis*), tung trees (*Aleurites* spp.), Chinese tallow tree (*Sapium sebiferum*), physic nut (*Jatropha curcas*)
- hydrocarbon *Euphorbia* spp.
- medicinal *Croton* spp., *Jatropha* spp.

The genus *Jatropha* belongs to tribe Joannesieae of Crotonoideae in the Euphorbiaceae family and contains approximately 170 known species. Dehgan and Webster (1979) revised the subdivision made by Pax (1910) and now distinguish two subgenera (*Curcas* and *Jatropha*) of the genus *Jatropha*, with 10 sections and 10 subsections to accommodate the Old and New World species. They postulated the physic nut (*Jatropha curcas* L. [sect. *Curcas* (Adans.) Griseb., subg. *Curcas* (Adans.) Pax]) to be the most primitive form of the *Jatropha* genus. Species in other sections evolved from the physic nut or another ancestral form, with changes in growth habit and flower structures. Hierarchical cluster analysis of 77 New World *Jatropha* species showed for the most part concordance with Dehgan and Webster's (1979) infrageneric classification (Dehgan and Schutzman 1994). Figure 1 shows the phenogramme of Neotropical *Jatropha* species. Further cladistic analysis supported Dehgan and Webster's (1979) evolutionary model of the genus *Jatropha*.

The following are other species that belong to the section *Curcas*: *J. pseudo-curcas* Muell. Arg., *J. afrocurcas* Pax, *J. macrophylla* Pax & Hoffm., *J. villosa* Wight (syn.: *J. wightiana* Muell. Arg.), *J. hintonii* Wilbur, *J. bartlettii* Wilbur, *J. mcvaughii* Dehgan & Webster and *J. yucatanensis* Briq. McVaugh (1945) considered *J. yucatanensis* to be a synonym of *J. curcas*. One species, *J. villosa*, is of Indian origin. Two, *J. afrocurcas* and *J. macrophylla*, are of East African origin, whereas all the other species in this section are native to the Americas.

Although most of the *Jatropha* species are native to the New World, approximately 66 species are native to the Old World. Dehgan and Webster (1979) offered a key to the infrageneric taxa but this should not be considered as final since information is still lacking on many species. No complete revision of the Old World *Jatropha* exists. Hemming and Radcliffe-Smith (1987) revised 25 Somalian species, all of the subgenus *Jatropha*, and placed them in six sections and five subsections. *Jatropha multifida* L. and *J. podagrica* Hook. of section *Peltatae*, *J. integerrima* of section *Polymorphae*, and *J. gossypiifolia* of section *Jatropha* are well known and cultivated throughout the tropics as ornamental plants.

Linnaeus (1753) was the first to name the physic nut *Jatropha curcas* L. according to

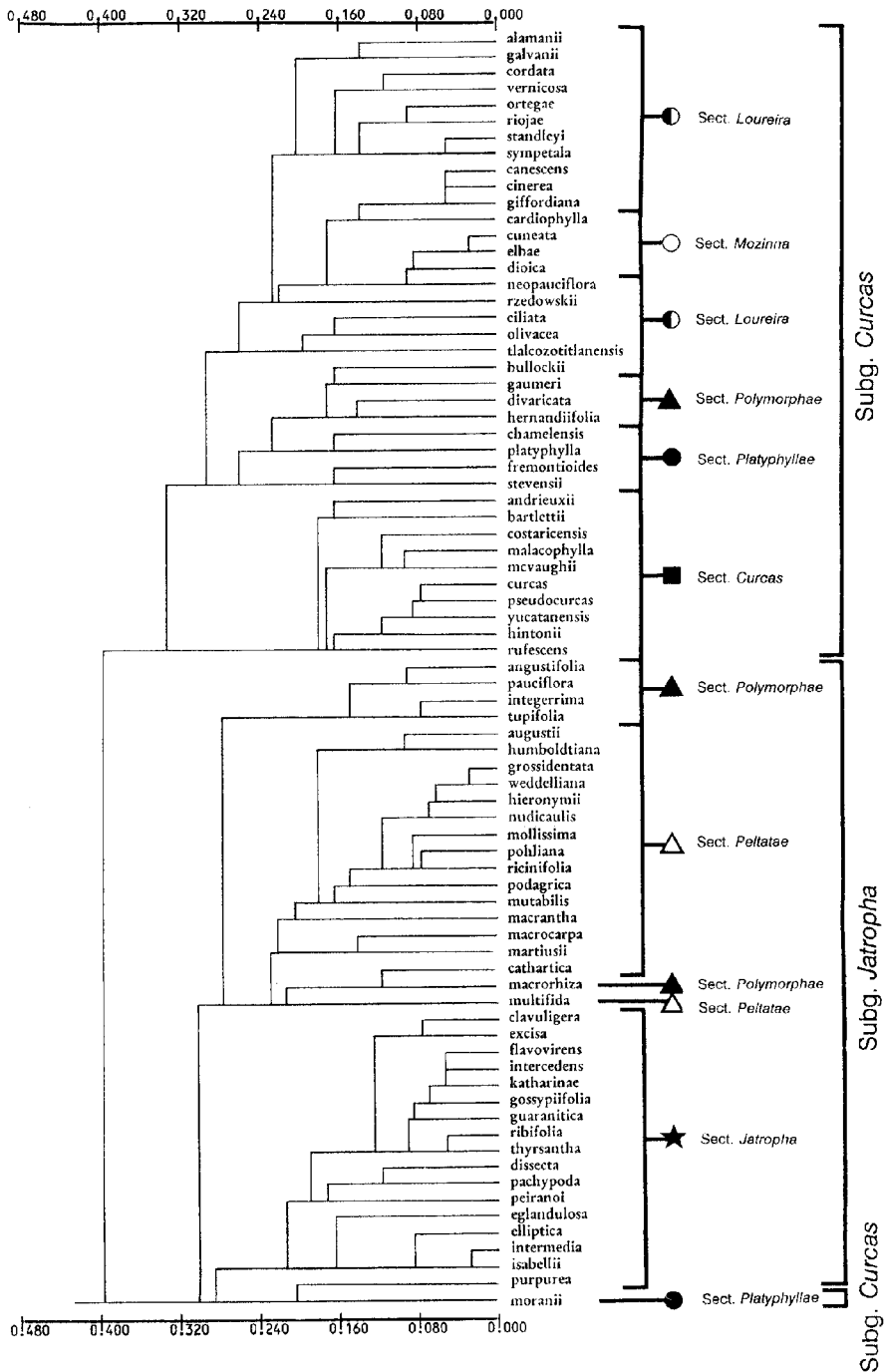


Fig. 1. Phenogramme of 77 Neotropical *Jatropha* species from 32 characters, using F.J. Rohlf's NTSYS-pc programme. Infrageneric designations are from Dehgan and Webster (1979) (reprinted with permission from Dehgan and Schützmann 1994).

the binomial nomenclature of “Species Plantarum” and this is still valid today. According to Dehgan and Webster (1979) and Schultze-Motel (1986), synonymous names of the physic nut are:

Curcas purgans Medik., Ind. Pl. Hort. Manhem. 1: 90. 1771; Baill. Étud. Gen. Euphorb. 314, 1858.

Ricinus americanus Miller, Gard. Dict. ed. 8. 1768.

Castiglioni lobata Ruiz & Pavon, Fl. Peruv. Prodr. 139, t. 37. 1794.

Jatropha edulis Cerv. Gaz. Lit. Mex. 3: supl. 4. 1794.

J. acerifolia Salisb., Prodr. Chapel Allerton 389. 1796.

Ricinus jarak Thunb., Fl. Javan. 23. 1825.

Curcas adansoni Endl., ex Heynh. Nomencl. 176. 1840.

Curcas indica A. Rich. in Sagra, Hist. Fis. Pol. Nat. Cuba 3: 208. 1853.

?*Jatropha yucatanensis* Briq. Ann. Cons. Jard. Genève 4: 230. 1900; Standley, Contr. U.S. Nat. Herb. 23: 640. 1923; McVaugh, Bull. Torrey Bot. Club 72: 35. 1945.

Curcas curcas (L.) Britton & Millsp., Bahama Fl. 225. 1920.

The genus name *Jatropha* derives from the Greek *iatrós* (doctor) and *trophé* (food) which implies medicinal uses. According to Correll and Correll (1982), *curcas* is the common name for physic nut in Malabar, India.

Numerous vernacular names exist for the physic nut: physic nut, purging nut (English); pourghère, pignon d’Inde (French); purgeernoot (Dutch); Purgiernuß, Brechnuß (German); purgueira (Portuguese); fagiola d’India (Italian); dand barrî, habel meluk (Arab); kanaanaranda, parvataranda (Sanskrit); bagbherenda, jangliarandi, safed arand (Hindi); kadam (Nepal); yu-lu-tzu (Chinese); sabudam (Thailand); túbang-bákod (the Philippines); jarak budeg (Indonesia); bagani (Côte d’Ivoire); kpoti (Togo); tabanani (Senegal); mupuluka (Angola); butuje (Nigeria); makaen (Tanzania); piñoncillo (Mexico); coquillo, tempate (Costa Rica); tártago (Puerto Rico); mundubi-assu (Brazil); piñol (Peru) and pinón (Guatemala) (Münch 1986; Schultze-Motel 1986).

3 Botanical description

The physic nut is a drought-resistant species which is widely cultivated in the tropics as a living fence. Many parts of the plants are used in traditional medicine. The seeds, however, are toxic to humans and many animals. Considerable amounts of physic nut seeds were produced on Cape Verde during the first half of this century, and this constituted an important contribution to the country's economy. Seeds were exported to Lisbon and Marseille for oil extraction and soap production. Today's global production is, however, negligible.

The physic nut, by definition, is a small tree or large shrub which can reach a height of up to 5 m. The plant shows articulated growth, with a morphological discontinuity at each increment. Dormancy is induced by fluctuations in rainfall and temperature/light. The branches contain latex. Normally, five roots are formed from seedlings, one central and four peripheral. A tap root is not usually formed by vegetatively propagated plants (Kobilke 1989). The physic nut has 5 to 7 shallow lobed leaves with a length and width of 6 to 15 cm, which are arranged alternately. Inflorescences are formed terminally on branches and are complex, possessing main and co-florescences with paracladia. Botanically, it can be described as a cyme. The plant is monoecious and flowers are unisexual; occasionally hermaphrodite flowers occur (Dehgan and Webster 1979). Ten stamens are arranged in two distinct whorls of five each in a single column in the androecium, and in close proximity to each other. In the gynoecium, the three slender styles are connate to about two-thirds of their length, dilating to massive bifurcate stigmata (Dehgan and Webster 1979).

Pollination of the physic nut is by insects. Dehgan and Webster (1979) believe that it is pollinated by moths because of "its sweet, heavy perfume at night, greenish white flowers, versatile anthers and protruding sexual organs, copious nectar, and absence of visible nectar guides". When insects are excluded from the greenhouse, seed set does not occur without hand-pollination. The rare hermaphrodite flowers can be self-pollinating. During field trials, Heller (1992) observed a number of different insects that visited flowers and could pollinate. In Senegal, he observed that staminate flowers open later than pistillate flowers in the same inflorescence. To a certain extent, this mechanism promotes cross-pollination. Münch (1986) did not observe this chronological order in Cape Verde. It seems that the mechanism is influenced by the environment. After pollination, a trilocular ellipsoidal fruit is formed. The exocarp remains fleshy until the seeds are mature. The seeds are black, 2 cm long and 1 cm thick. The caruncle is rather small. Wiehr (1930) and Droit (1932) described the microscopical anatomy of the seeds in detail, while Singh (1970) described that of fruits. Gupta (1985) investigated the anatomy of other plant parts. The physic nut is a diploid species with $2n = 22$ chromosomes. Relevant parts of the plant are shown in Figures 2 and 3.

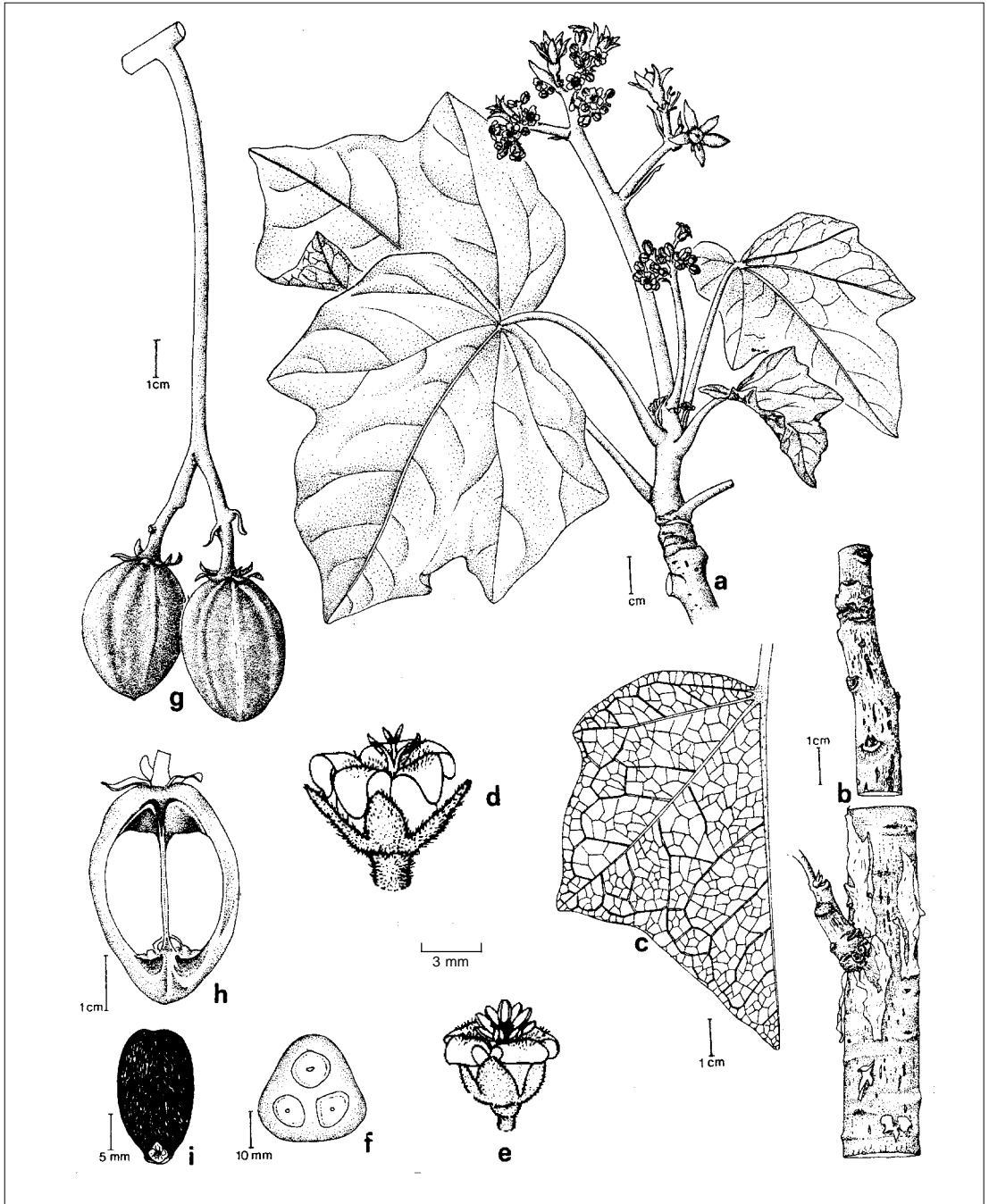


Fig. 2. Important parts of the physic nut: a - flowering branch, b - bark, c - leaf veinature, d - pistillate flower, e - staminate flower, f - cross-cut of immature fruit, g - fruits, h - longitudinal cut of fruits; a - c and f - h from Aponte 1978; d and e from Dehgan 1984 (reprinted with permission).

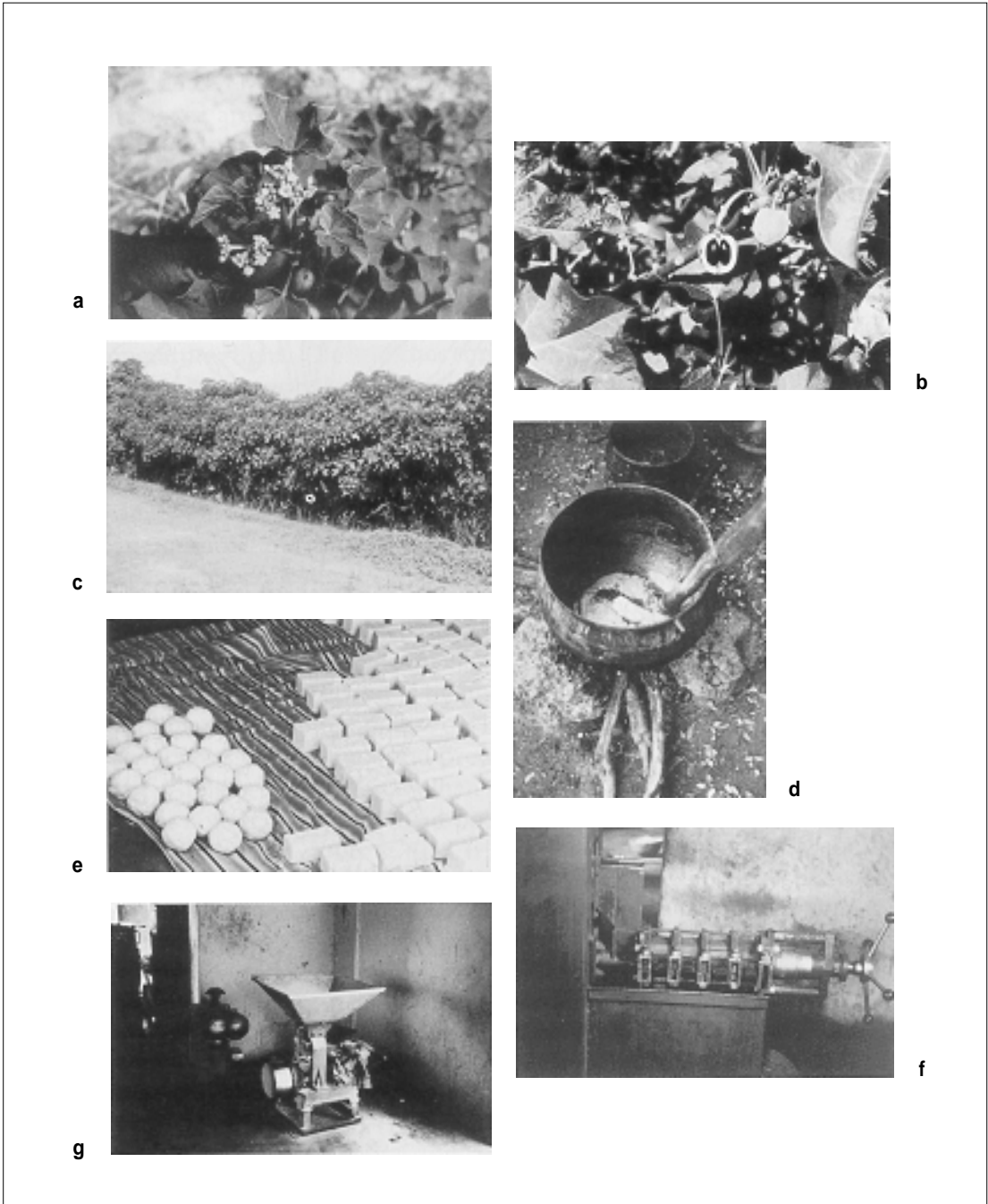


Fig. 3. (a) Inflorescence; (b) branch with fruits; (c) hedge in Mali; (d) cooking of oil with soda solution; (e) soap production in Ouélessebouyou, Mali; (f) Sundhara oil press; (g) grain mill with Hatz engine (sources b-g: Henning)

4 Origin and centre of diversity

A number of scientists have attempted to define the origin of physic nut, but the source remains controversial. Martin and Mayeux (1984) identified the Ceara state in Brazil as a centre of origin but without giving any arguments. Dehgan and Webster (1979) cite Wilbur (1954) as follows: “it was without doubt part of the flora of Mexico and probably of northern Central America before the arrival of Cortez, and it most likely originated there ... the subsection, hence, appears to be one which originally was nearly or completely restricted to Mexico.” According to other sources, the physic nut seems to be native to Central America as well as to Mexico where it occurs naturally in the forests of coastal regions (Aponte 1978). However, Dehgan (pers. comm.) did not find true wild physic nut plants when collecting *Jatropha*s in Mexico. Those he found had always “escaped” from cultivated hedges. During a visit to Professor Dehgan’s Horticultural Systematics Laboratory, the author checked hundreds of herbarium specimens from the following herbaria for the distribution of the physic nut in Mexico, Central America and the Caribbean: DAV, F, FLAS, GH, MICH, MO, NY, RSA, TEX, UC and US. The material collected originated mostly from Mexico and all Central American countries: Belize, Costa Rica, El Salvador, Guatemala, Honduras, Nicaragua and Panama, with the majority coming from Mexico. Many records also exist for the Caribbean: Bahamas, Cuba, Dominica, Dominican Republic, Haiti, Puerto Rico, Saint Lucia, Santo Domingo, St. Croix, Trinidad and other West Indian countries. In the following South American countries, the physic nut occurs to a lesser extent, according to their representation in the herbaria listed above: Argentina, Bolivia, Brazil, Colombia, Ecuador and the Galapagos Islands, Paraguay, Peru and Venezuela. It has been introduced into Florida.

Herbarium specimens of the Americas were usually collected from hedges along roads and paths, live fence posts or disturbed sites (“disturbed forest”). Standley and Steyermark (1949) confirm this and state for Guatemala that “the shrub may not be native in Guatemala, since it is found principally in hedges, but if not, doubtless it has been in cultivation for a long time”. However, the information provided by many collectors seems to support the argument that the species was collected from “natural” vegetation in the Americas, as the following vegetation forms were given on the herbarium labels mentioned above: bosque humido, forest, bosque seco tropical, cactus and thorn scrub, shrubby slope, thicket near river bank, tropical dry forest, bosque seco y espinoso, dry steep hillside, woodland, hillside with dense shrubs and woods, or coastal thickets. It is highly probable that the centre of origin of the physic nut is in Mexico (and Central America) since it is not found in these forms of vegetation in Africa and Asia but only in cultivated form. The “true” centre of origin, however, still has to be found. To elucidate this, the original collecting sites in Mexico and Central America would have to be revisited and the existing diversity assessed, preferably by molecular techniques.

From the Caribbean, this species was probably distributed by Portuguese seafarers via the Cape Verde Islands and former Portuguese Guinea (now Guinea Bissau) to other countries in Africa and Asia. No facts are available in the literature before 1800 as to when the physic nut was introduced into Cape Verde (Serra 1950). Freitas (1906), citing Pusich, says that the physic nut was already known several years prior to 1810, as he

mentioned it in his book “Memoria ou descripção physico-politica das ilhas de Cabo Verde”. Chelmicki and Varnhagen (1841) mention that exports of physic nuts had already begun in 1836. Many decrees were published in the “Boletim Oficial de Cabo Verde” from 1843 onwards to promote the planting of physic nut (Freitas 1906; Serra 1950).

Burkill (1966) assumes that the Portuguese brought the physic nut to Asia: “Perhaps it did not reach Malacca until a date when the Dutch were in possession, for the

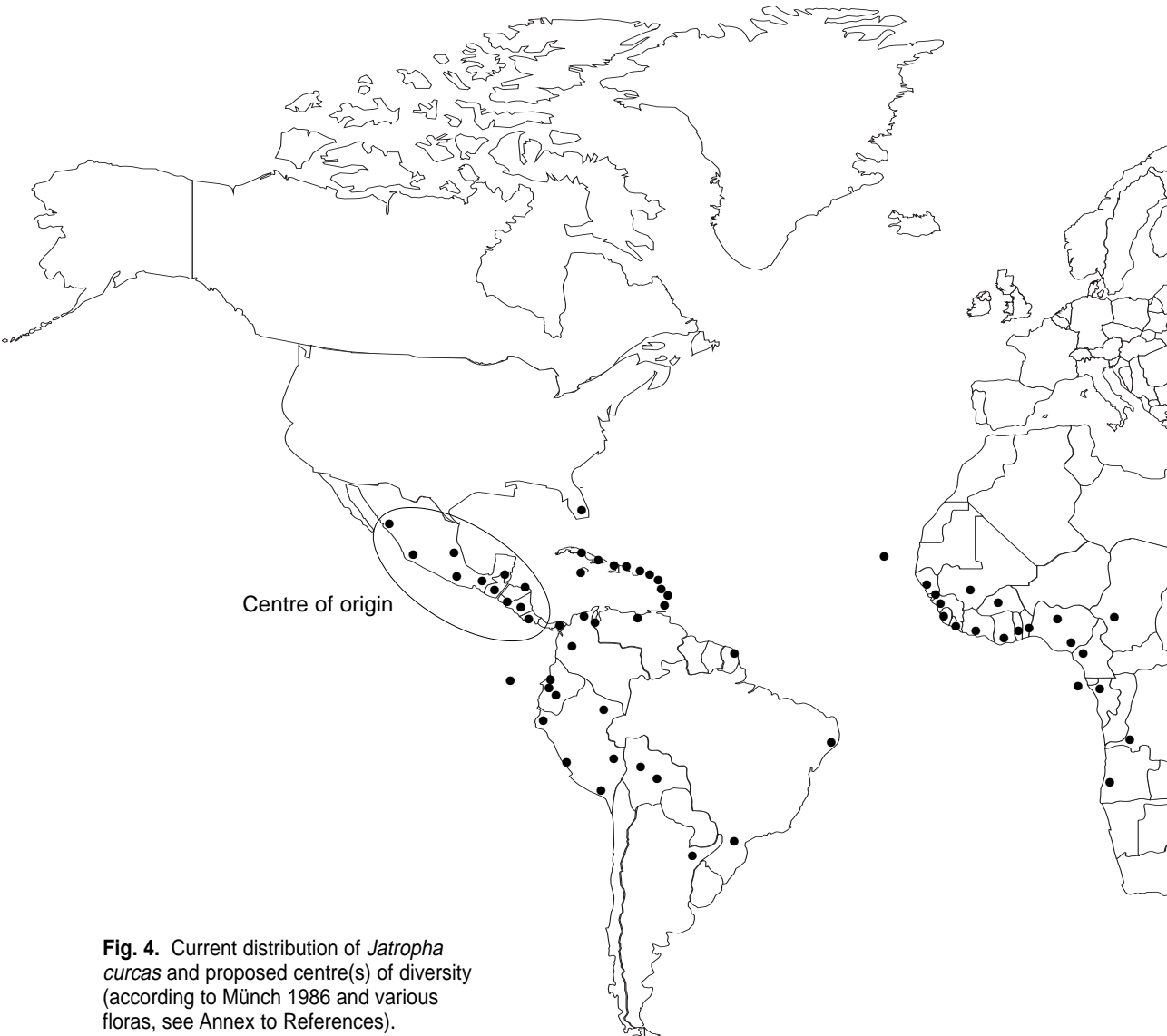


Fig. 4. Current distribution of *Jatropha curcas* and proposed centre(s) of diversity (according to Münch 1986 and various floras, see Annex to References).

Malays call it by a name meaning Dutch castor oil. Nevertheless, the Portuguese transported it to the Old World. The Javanese, among other names, call it Chinese castor oil. It is regarded in most countries, in Africa as well as in the East, as the 'castor oil plant', which shows that it was brought in and planted for the oil; further, it is widely known as the 'hedge castor oil plant', showing where it was planted, namely in hedges. Merrill (Bur. Gov. Lab. Philipp. 6, 1903 p. 27) shows that it was in the Philippines before 1750." Today it is cultivated in many countries. Figure 4 shows its distribution according to various sources (see Bibliography).



5 Properties

Numerous investigations have been carried out to determine the content of physic nut seeds. Results of the older analyses are not reported here, because the methods are not comparable with modern methods. Prof. J.E. Mendes Ferrao, University of Lisbon, was especially instrumental in determining physic nut content. Table 1 shows the results of determinations of moisture, ash, crude protein, crude fat, crude fibre (based on the seed kernel) and of the crude fat content (based on the seed) of different samples from Cape Verde (Santiago and Fogo) and Sao Tome and Principe. Part of the analyses was performed only on the seed kernel, not on the whole seeds and cannot, therefore, be compared with other analyses.

Numerous sources are available on the fatty acid composition of physic nut oil originating from different countries. The values given in Figure 5 refer only to the four most important fatty acids: palmitic (C16:0), stearic (C18:0), oleic (C18:1) and linoleic acid (C18:2). Fatty acids were determined by gas chromatography of the fatty acids after methylesterification. The average saturated fatty acid content of the seed samples is low: 15.38% for palmitic (C16:0) and 6.24% for stearic acid (C18:0). The average content of the unsaturated fatty acids, oleic (C18:1) and linoleic acid (C18:2) is considerably higher at 40.23 and 36.32%. Depending on the origin, either oleic or linoleic acid content is higher. The seed oil belongs to the oleic or linoleic acid group, to which the majority of vegetable oils belong (Rehm and Espig 1991).

Table 1. Composition of physic nut seeds from Cape Verde (Fogo und Santiago) and Sao Tomé und Principe (from Ferrao and Ferrao 1981, 1984; Ferrao *et al.* 1982).

Location	Seed composition (%)		Contents (%)					Seed Crude fat
			Kernel		Crude prot.	Crude fat	Crude fibre	
	Shell	Kernel	Moist.	Ash				
Fogo	35.46	64.54	4.68	4.48	20.25	52.83	0.94	34.09
Santiago	44.92	55.08	3.78	3.83	23.48	59.78	1.90	32.90
Sao Tomé	47.74	49.98	7.79	6.37	28.44	46.72	4.23	23.67
Mean	42.71	56.53	5.42	4.89	24.06	53.11	2.36	30.22

Toxicology

The toxicity of the seeds is mainly due to the following seed components: a toxic protein (curcin) and diterpene esters. Poisoning is reported in Chapter 6 (Uses). Curcin is similar to ricin, the toxic protein of the castorbean (*Ricinus communis*). The pure substances are the most potent toxins in the plant kingdom and will kill when administered in quantities of micrograms. Georgi Markov, a Bulgarian journalist who lived in London, was killed in 1978, probably with ricin poison that was contained in an umbrella spike (Griffiths *et al.* 1987). Felke (1913) was the first to isolate curcin. Curcin hinders protein synthesis *in vitro*

(Stirpe *et al.* 1976). Diterpenes have been isolated from seeds (Adolf *et al.* 1984) and roots (Naengchomng *et al.* 1986; Chen *et al.* 1988). These substances promoted skin tumours in a mouse cocarcinogenesis experiment. Horiuchi *et al.* (1987) suggested that an epidemiological study be carried out on human cancer in Thailand, since the skin of Thai people comes into direct contact with the seed oil. The GTZ financed a study on the possibility of detoxifying the seed cake and the mutation potential of the diterpenoids in the oil. Prof. Wink of the University of Heidelberg carried out the study (Wink 1993).

The major findings were:

- seed cake still contains approximately 11% oil content, in which the thermostable toxic diterpenes are bound
- heating of up to 100°C for 30 minutes did not de-activate the lectins in whole seeds and dry seed cake
- cooking of ground seeds or seed cake for 5 minutes deactivates the lectins
- the oil has no mutagenic properties; when handled with care, there is no danger for workers.

Feeding trials were carried out with many different animal species (dog – Siegel 1893; rabbit – Felke 1913; guinea pigs and hares – Droit 1932). In more recent trials, the toxicity of ground seeds has been demonstrated on mice, rats, goats, calves and chicks (Adam and Magzoub 1975; Ahmed and Adam 1979; Liberalino *et al.* 1988; El-Badwi *et al.* 1995). In contrast to this, Panigrahi *et al.* (1984) did not find such drastic poisoning of mice and rats with seeds of Mexican origin.

The results of these feeding trials cannot be accurately compared because of the different origin of the seeds, the preparation of diet, dosage and other factors. The toxic effects seem to be different on different animal species. Use in animal nutrition is not, therefore, possible without detoxification. Wink (1993) gave indications for detoxification in laboratory experiments. However, feasibility and profitability have to be proven on a large scale.

Composition (%)

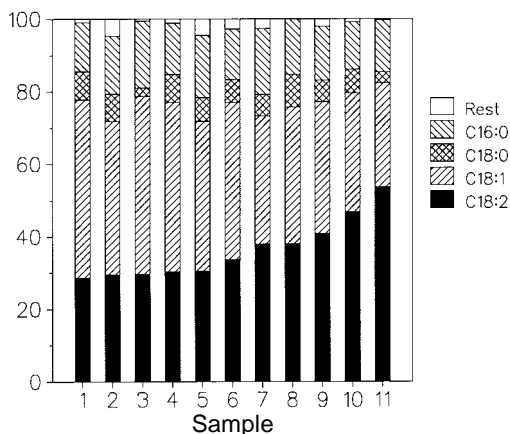


Fig. 5. Fatty acid composition of the seed oil of different seed samples (1 - Sao Tomé and Príncipe (Ferrao and Ferrao 1984); 2 - Paraguay (Matsuno *et al.* 1985); 3 - India (Banerji *et al.* 1985); 4 - Pakistan (Nasir *et al.* 1988); 5 - Cape Verde, Santiago (Ferrao and Ferrao 1981); 6 - Senegal (Heller 1992); 7 - Cape Verde, Fogo (Ferrao *et al.* 1982); 8 - Mexico (Aponte 1978); 9 Cape Verde, Santiago (Heller 1992); 10 - Brazil, Araçatuba, SP (Teixeira 1987); 11 - Brazil, Tatui, SP (Teixeira 1987).

6 Uses

Whole plant and food/fodder

The plant is widely cultivated in the tropics as a living fence in fields and settlements. This is mainly because it can easily be propagated by cuttings, densely planted for this purpose, and because the species is not browsed by cattle. According to Budowski (1987), physic nut is one of the hedge plants frequently found in certain regions of El Salvador. It is also one of the main trees planted in Upper Guinea as a hedge (Diallo 1994). In Mali, there are several thousand kilometres of *Jatropha* hedges and the Cotton Marketing Authority of Mali is planning to establish new hedges (Fig. 3c; Lutz 1992; Henning and von Mitzlaff 1995). Physic nut is also quite common in Burkina Faso (Zan 1985). In Cape Verde, physic nut was recently planted in arid areas for soil erosion control. Of a total area of 1386 ha planted with trees (such as *Acacia*, *Parkinsonia* and *Prosopis*) in 1989, 5.4% were physic nut. It also formed 14.6% of the total area of 4462 ha reforested in 1990 (Van den Bergh 1985; Spaak 1990). In Madagascar, it is used as a support plant for vanilla. The wood was used as a (poor quality) burning material in Cape Verde. In a green manure trial with rice in Nepal, the application of 10 t of fresh physic nut biomass resulted in a yield increase of 11%, compared with 23% with *Adhatoda vasica*, 17% with *Albizia lebbek* and 14% with *Hdarhwa antidysenteria*. Unfertilized rice had a yield of 4.11 t/ha (paddy) (Sherchan *et al.* 1989).

Duke (1985), citing Ochse (1931), says that the young leaves may be safely eaten when steamed or stewed. In the literature, it is reported that the physic nut seed is eaten in certain regions of Mexico once it has been boiled and roasted (Aponte 1978; Panigrahi *et al.* 1984; Delgado and Parado 1989; Martinez 1994, pers. comm.). According to analyses carried out by Wink, the Mexican seeds do not contain phorbol esters. Levingston and Zamora (1983) report that the seeds are edible, once the embryo has been removed. It seems that seeds of Mexican origin have less toxic content so that, with proper processing, the seeds can be eaten. Consumption of processed seeds of other origin should on principle be avoided. Many cases of poisoning with physic nut are reported in the literature (Siegel 1893). Lippmann (1913) described in detail the medical findings of two workers who ate 30 to 40 physic nut seeds. Abdu-Aguye *et al.* (1986) described the poisoning of two children who accidentally ingested seeds and Joubert *et al.* (1984) reported a similar case in South Africa.

Physic nut plants are planted around houses to guard against misfortunes in the south-east of Piaui (Brazil) (Emperaire and Pinton 1986). *Jatropha curcas* (and *Erythrophleum guineense*) was used in supernaturally guided ordeals by the Shambaa in Usambara to determine the guilt or innocence of the accused. Accused persons had to consume the poison; the innocent vomited whereas the guilty died (Fleuret 1980).

Medicine

Preparations of all parts of the plant, including seeds, leaves and bark, fresh or as a decoction, are used in traditional medicine and for veterinary purposes. The oil has a strong purgative action and is also widely used for skin diseases and to soothe pain such as that caused by rheumatism. A decoction of leaves is used against cough and as an

antiseptic after birth. Branches are used as a chewing stick in Nigeria (Isawumi 1978). The sap flowing from the stem is used to arrest bleeding of wounds. Nath and Dutta (1992) demonstrated the wound-healing properties of curcain, a proteolytic enzyme isolated from latex. Latex has antimicrobial properties against *Staphylococcus aureus*, *Escherichia coli*, *Klebsiella pneumoniae*, *Streptococcus pyogenes* and *Candida albicans* (Thomas 1989). Kone-Bamba *et al.* (1987) demonstrated the coagulating effects on blood plasma. Other uses in traditional medicine are described in the following sources: Irvine (1961), Persinos *et al.* (1964), Kerharo and Adam (1974), Quisumbing (1978), Levingston and Zamora (1983), Co and Taguba (1984), Duke (1985), Gupta (1985), Oliver-Bever (1986), Elisabetsky and Gely (1987), Lentz (1993) and Manandhar (1995). Further scientific research confirmed the effects described above in trials. Extracts from physic nut fruits showed pregnancy-terminating effects in rats (Goonasekera *et al.* 1995). The authors suggested further studies to elucidate whether the embryotoxic effect is due to a specific action or a result of general toxicity. Muanza *et al.* (1995) found that a methanol extract of physic nut leaves afforded moderate protection for cultured human lymphoblastoid cells against the cytopathic effects of human immunodeficiency virus. Extract of the leaves showed potent cardiovascular action in guinea pigs and might be a possible source of beta-blocker agent (Fojas *et al.* 1986).

Plant protectant and molluscicide

According to a survey by Grainge and Ahmed (1988) on plants with insecticidal properties, extracts from all parts of the physic nut show such properties. The seed oil, extracts of physic nut seeds and phorbol esters from the oil were used to control various pests with, in many cases, successful result. Table 2 shows a list of insects which were given different preparations. As these trials are still in the experimental stage, the oil or extracts cannot yet be used by farmers as plant protectants.

Aqueous extracts of physic nut leaves were effective in controlling *Sclerotium* sp., an *Azolla* fungal pathogen (Garcia and Lawas 1990). In laboratory experiments, ground physic nut showed molluscicidal activity against the host of liver fluke (*Lymnaea auricularia rubiginosa*), a disease which is widely distributed in the Philippines (Agaceta *et al.* 1981), and also against the hosts of *Fasciola gigantica* and *Schistosoma* in Senegal (Vassiliades 1984). Extracts from crushed whole seeds showed molluscicidal activity against several schistosome vector snails (Liu *et al.* in press; Rug *et al.* 1996). Phorbol esters were probably the active agents in the different extracts used.

However, it should be pointed out that the physic nut is a host for cassava viruses that can be transmitted. Münch (1986) states that cassava superelongation disease (*Sphaceloma manihoticola/Elsinoe brasiliensis*) can be transmitted from the physic nut. Another *Jatropha* species, *J. multifida*, is an alternate host plant for African Cassava Mosaic Virus (ACMV), which is transmitted by whiteflies (*Bemisia tabaci*) in India and East and West Africa (Okoth 1991). It can be assumed that this also applies to physic nut. Since this plays an important role in disease epidemiology, physic nut should not be used to fence in cassava fields. Physic nut is considered a potential weed in the Northern Territory of Australia because of its distribution throughout the world, the toxicity of its

Table 2. Pesticidal properties of various seed extracts.

Insect	Pest of	Preparation	Reference
<i>Helicoverpa armigera</i>	cotton	acetone extract of seeds; aqueous extract from oil; seed oil	Solsoloy <i>et al.</i> (1987) Solsoloy (1993) Solsoloy (1995)
<i>Aphis gossypii</i>	cotton	aqueous extract from oil; seed oil	Solsoloy (1993) Solsoloy (1995)
<i>Pectinophora gossypiella</i>	cotton	aqueous extract from seed oil	Solsoloy (1993)
<i>Empoasca biguttula</i> (syn. <i>Amrasca biguttula</i>)	cotton	seed oil	Solsoloy (1995)
<i>Phthorimaea operculella</i>	potato	seed oil	Shelke <i>et al.</i> (1985)
<i>Callosobruchus maculatus</i>	pulse	seed oil	Jadhav and Jadhav (1984)
<i>Callosobruchus chinensis</i>	mungbean	seed oil	Solsoloy (1995)
<i>Sitophilus zeamays</i>	corn	seed oil	Solsoloy (1995)
<i>Manduca sexta</i>	?	phorbol esters	Sauerwein <i>et al.</i> (1993)
<i>Sesamia calamistis</i>	sorghum	oil and phorbol esters	Henning 1994

seeds, related plants and its control (Crothers 1994). It is spread by seeds on rocky slopes in Cape Verde, thus creating dense stands. In uncultivated lands, it is a potential weed.

Technical uses

In former times, the seed oil was used mainly for soap production. Because of growing interest in extracting seed oil in Cape Verde, several studies were carried out to assess the feasibility of setting up oil-extraction plants (Esteves 1960; Andrade 1978; Cossel *et al.* 1982). The Cossel *et al.* (1982) study was carried out for GTZ which, at that time, was running a project on integrated development measures on the islands of Fogo and Brava, and the oil-extraction plant would have been an integral part of a soap-production facility. Since the soap factory was not considered to be competitive, this part of the project was not further pursued. In spite of the positive economic conclusions of Portuguese studies (Esteves 1960; Andrade 1978), none of the plans were put into practice. Soap is produced in an indigenous way today in Mali, where oil is boiled with a soda solution (Fig. 3d and e; Henning 1994). The laborious process, which uses a basis of ground seeds, is described by Freitas (1906). Research carried out by the Tata Oil Mills Co. Ltd., Bombay has shown that with a mixture of 75% hydrogenated physic nut oil, 15% refined and bleached physic nut oil and 10% coconut oil, a soap can be produced with lathering values equivalent to their regular production line toilet soap. Hardened physic nut oil could be a satisfactory substitute for tallow or hardened rice bran oil (Holla *et al.* 1993).

Seed oil can be extracted either hydraulically using a press or chemically using solvents. Chemical extraction cannot be achieved on a small-scale basis. Several types of mechanical equipment are available: screw presses (hand- or engine-powered), spindle

presses and hydraulic presses, which are distributed widely throughout developing countries for the extraction of seed oils for nutrition purposes. Hydraulic presses are widely used for shea nut processing in West Africa. A consulting group of the Protestant Church of Germany (FAKT), in collaboration with organizations in India and Nepal, improved the oil expeller commonly used in South Asia (based on "the model no. 1" by Anderson, dated 1906). The main aims of this project were:

- to reduce the weight of the machines (important for transportation in remote areas of Nepal)
- to modernize the techniques used; to enhance oil recovery
- to make use of other oil seeds for extraction.

Seven machines are now being tested in Nepal under field conditions and a manufacturing facility has been installed. The so-called Sundhara oil expeller was also tested for processing physic nut (Fig. 3f). The extraction rate was 47.2, 82.0 and 88.9% for the first, second and third pass respectively, without shelling of seeds. The oil content of the seeds was 34.5% (FAKT 1992, no date). With solvent extraction, 95 to 99% of the total available oil can be obtained.

Diesel fuel

As early as 1911, Rudolf Diesel, who invented the diesel engine, made the following statement in a letter: "It is generally forgotten, that vegetable and animal oils can be used directly in diesel engines. A small diesel engine ran ... with peanut oil during the world exhibition of Paris in 1900, and which worked so exceptionally well, that the change of fuel was realized by only a few visitors" (Kiefer 1986). In experiments carried out until 1950, vegetable oils were used without problem in common engines with prechamber injection. Henning and Kone (no date) reported activities involving the use of physic nut oil in engines in Segou, Mali during World War II.

Since the oil crisis of the 1970s and recognition of the limitations of world oil resources, this technology has received special attention. Most of the research was carried out in temperate regions with the aim of making available to farmers possibilities for diversifying in view of the increasing subsidy-driven surpluses in traditional commodities. Another argument for the cultivation of oil crops for energy purposes is the increasing global warming/greenhouse effect. When these fuels are burned, the atmosphere is not polluted by carbon dioxide, since this has already been assimilated during the growth of these crops. The CO₂ balance, therefore, remains equable.

Special interest has been shown in the cultivation of physic nut for this purpose, especially since it is drought resistant and can potentially be used to produce oil from marginal semi-arid lands, without competing with food production. In addition, these fuels can be used partly to substitute costly oil imports for landlocked countries. The use of physic nut seed oil in car engines is reported in the literature (Mensier and Loury 1950; Cabral 1964; Takeda 1982; Ishii and Takeuchi 1987) and in unpublished research reports. A GTZ experiment in the Cape Verde Islands to power engines with physic nut seed oil failed. This was due to mismanagement by workers who incorrectly used the oil as a lubricant in an engine, which was destroyed. However, the

direct injection Elsbett engine performed well during long-term experiments. Recently, GTZ launched another project to show the feasibility of (physic nut oil) production and use in several stationary engines under field conditions in Mali (Fig. 3g). In a former GTZ project carried out in Mali, it has been demonstrated that physic nut oil is competitive with imported diesel, especially in remote areas, where fuel is often not available (Lutz 1992; Appropriate Technology International, concept paper "Mali vegetable motor fuel production").

A wide array of technical options is available for using vegetable oil in diesel engines. The filtered oil can be used directly in many suitable engines (Deutz, Hatz, IFA, Elsbett, DMS, Farymann and Lister-type (India)). These include, apart from prechamber injection, direct-injection engines which can be used in a stationary way to drive mills and generators or in vehicles. All the engines were tested in long-term experiments with different vegetable oils, including physic nut oil (Lutz 1992; Pak and Alexi 1994).

Transesterified oil can be used in any diesel engine. This process is normally carried out in centralized plants since the small-scale economy of transesterification has not been determined. During the process, methanol, a highly flammable and toxic chemical, has to be used. This requires explosion-proof mixing equipment which might not always be available in certain developing countries. An Austrian-funded project in Nicaragua is constructing a plant that aims to produce 1600 t of methyl esters annually at a cost of US\$0.74 per gallon. G.F. van Grieken (unpublished) assessed the energy efficiency of the methyl ester production process of physic nut and found that the efficiency of the EMAT (Ester Metilico de Ester et de Tempate) process is high, with an energy input:output ratio of 1:5.2. Ouedraogo *et al.* (1991) compared the performance of transesterified rapeseed and physic nut oil in diesel engines. Their results showed that neither of these fuels can be claimed to be superior.

A recent development is the "Schur Diesel" where vegetable oil (80%), petrol (14%), alcohol (6%) and a certain amount of an unknown component are mixed. This fuel can be used in all Diesel engines (Lutz 1992; Anon. 1993). However, owing to the unavailability of petrol and alcohol in rural areas of developing countries, this process might not yet be applicable for such areas.

In general, it would appear that the technological basis presents no problems and has been resolved. Economic analyses have demonstrated that physic nut fuel can compete with Diesel fuel in villages in Mali (Demant and Gajo 1992; Henning and von Mitzlaff 1995).

Other uses

The press cake cannot be used in animal feed because of its toxic properties, but it is valuable as organic manure since it has a nitrogen content similar to that of the seed cake of castorbean and chicken manure. The nitrogen content ranges from 3.2 to 3.8%, depending on the source (Juillet *et al.* 1955; Moreira 1970; Vöhringer 1987). Freitas (1906) reported on trials with physic nut seed cake used on wheat at the Estacao Agronomica de Lisboa from 1871 to 1872. Moreira (1970) applied physic nut seed cake at different rates to different crops in pots and in field trials. Applications

showed phytotoxicity, expressed as reduced germination, when high rates of up to 5 t/ha were applied. Phytotoxicity to tomatoes seeded in the field was reduced by increasing the time difference between application and seeding.

The GTZ project in Mali carried out a fertilizer trial with pearl millet where the effect of manure (5 t/ha), physic nut press cake (5 t/ha) and mineral fertilizer (100 kg ammonium phosphate and 50 kg urea/ha) on pearl millet was investigated. Pearl millet yields per ha were 630 kg for the control, 815 kg for manure, 1366 kg for press cake and 1135 kg for mineral fertilizer. As the costs for mineral fertilizer were higher than those for the press cake, the rentability was 30 000 FCFA (US\$60) higher for the latter (Henning *et al.* 1995).

Fruit hulls and seed shells can be used as a burning material.

Figure 6 summarizes the multiple utilization possibilities of the physic nut.

The case of the GTZ project in Mali will be used to demonstrate the economic benefits of physic nut cultivation. The *Jatropha* system is based on existing hedges that were used to fence in fields and to control erosion. The project promotes this system by creating a market for physic nut products. Small, simple hand- or engine-driven oil presses were installed to produce oil that can be used to drive stationary engines. These engines drive grain mills, water pumps or the oil press itself. The oil is also a raw material for soap production that generates income to local women producers. The press cake is appreciated by farmers and can be sold for 10 FCFA per kg (US\$0.02/kg). Economic analysis has shown that physic nut can be produced at a price of 215 FCFA (US\$0.63) (including all costs), which is 78% of the official diesel price. Henning (1996) gives a description of an economic calculation for three different processing and use systems: (1) a hand-operated "Bielenberg" press with a capacity of approximately 10 t of seed per year, (2) a Sundhara press driven by an Indian-built Lister-type engine, and (3) a Sundhara press driven with a Hatz engine. Internal rates of return were calculated as 75, 49 and 26%, respectively. The primary aim of this project is not to use physic nut oil as a fuel, but rather to use this important element to promote the cycle system, which combines ecologic, economic and income-generating effects (Henning and von Mitzlaff 1995). The macro-economic analysis, which took into consideration both the substitution value of the oil as a domestic fuel, and the indirect effects (erosion control, press cake as fertilizer, etc.), showed an economic rate of return of 135% (Henning 1996). People started planting new hedges. A survey carried out by the project has shown that the length of hedges in the zone of Falan increased by 20% and by 40% in the zone of Kita respectively, from 1994 to 1995 (Henning, pers. comm.).

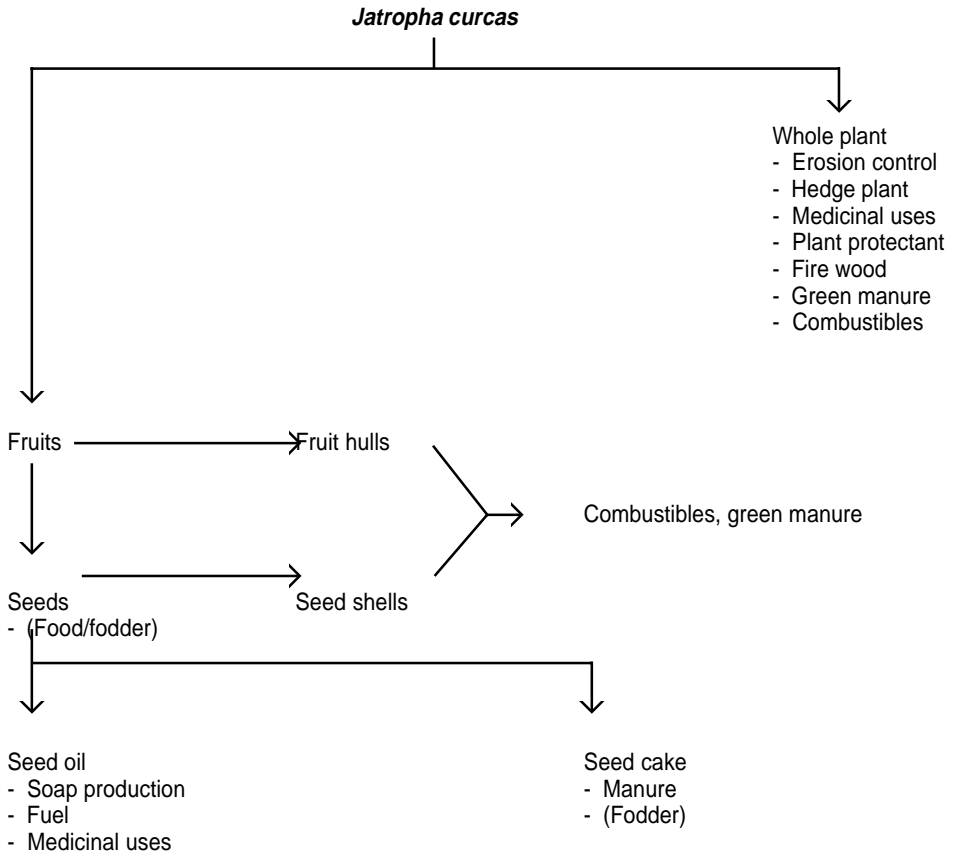


Fig. 6. Different forms of physic nut utilization (modified from Kiefer 1986).

7 Genetic resources

Existing genetic variation

So far, only four records of systematic provenance trials exist where an attempt was made to examine the genetic variation of the physic nut.

Sukarin *et al.* (1987) did not observe any morphological differences between 42 clones originating from different locations in Thailand and planted in a provenance trial at the Khon Kaen Field Crops Research Center. Differences in vegetative development and first seed yields were not reported.

Adaptive trials on *J. curcas* and *J. gossypifolia* were undertaken at Hisar, Bangalore and Sardar Krushinagar in India (Bhag Mal, pers. comm.). The evaluation of five cultivars revealed a good degree of variation for plant height, branches per plant and seed yield per plot at Hisar. Quite high seed yields (1733 kg/ha) were observed in one cultivar when two physic nut cultivars and *J. gossypiflora* were compared. At Bangalore, the two species were compared only for plant height. In all these trials, only local Indian types were used.

In Northern Nicaragua, an Austrian-funded project enabled planting of 1200 ha with Nicaraguan and Cape Verde provenances. These two types looked different in the field: the Nicaraguan type has a less branched habit, larger paler leaves and bigger seeds, whereas the Cape Verde provenance produced higher seed yields. In the Nicaraguan material, a male sterile plant was observed which produces more fruits than the hermaphrodite types. Male sterile plants will facilitate breeding efforts for higher seed production (Foidl, pers. comm.). The yield differences between the Cape Verde and Nicaragua types are being analyzed (Thierolf, pers. comm.).

Table 3. Origin of seed provenances (provenance number used in Figures 6 and 7 in parentheses) and climatic data of collecting sites (Heller 1992).

Origin of provenances	Altitude (m)	Average temp. (°C)	Average annual rainfall (mm)
Cape Verde, Fogo (1)	150-1600	19-25	200-1000
Senegal, Santhie Ram (2)	15	28	700
Ghana, Nyankpala (3)	183	27.8	1080
Benin, Cotonou (4)	7	25.3	1330
Burkina Faso, Kongoussi (5)	300	?	520
Kenya, Kitui (6)	1020	28?	790
Tanzania, Mombo (7)	430	>20	670
Burma, Sink Gaing, Mandalay (8)	80	27	825
India, Kangra (9)	580	?	?
India, Kangra(10)	434	11-38	?
India, Poona (11)	556	24.6	672
Costa Rica, Rio Grande (12)	10	27.5	2000
Mexico, Veracruz (13)	16	24.8	1623

In 1987 and 1988, Heller (1992) tested a collection of 13 provenances in multilocation field trials in two countries of the Sahel region: Senegal and Cape Verde. The two locations in Senegal, Samba Gueye and Toubacouta, lie north of the border with The Gambia, in the Department of Fatick. On Cape Verde, the trials were conducted on the island of Santiago at Sao Jorge and Tarrafal (Chao Bom). The sites have a semi-arid climate, with a short rainy season (approximately 4 months) and a longer dry season of approximately 8 months with a wide variation in rainfall (200-800 mm). Table 3 shows the origin of the seed provenances used and the climatic data for the locations. Provenances originated from different countries in North and Central America, West and East Africa, and Asia. As seeds from Mexico and Costa Rica were not available in 1987, these were compared with the Senegal provenance in a separate trial in 1988.

Vegetative development was evaluated at each location and was seen to vary greatly (Table 4). Significant differences in the vegetative development were detected among the various provenances at all locations. Plants of various provenances appeared very uniform as to morphological characters (such as leaf shape) (Heller 1992).

The paired calculation of both provenance trials in Senegal (at Toubacouta and Samba Gueye) showed that genotype-environment-interaction (GxE) was significant for all parameters, that is to say, the environments exerted a specific influence on certain provenances. Plant heights at 3.6 months after planting (MAP) are given as an example. Figure 7 indicates how provenances reacted differently to the environments. The two locations are situated at a distance of only 19 km from each other. The rainfall conditions can, there-

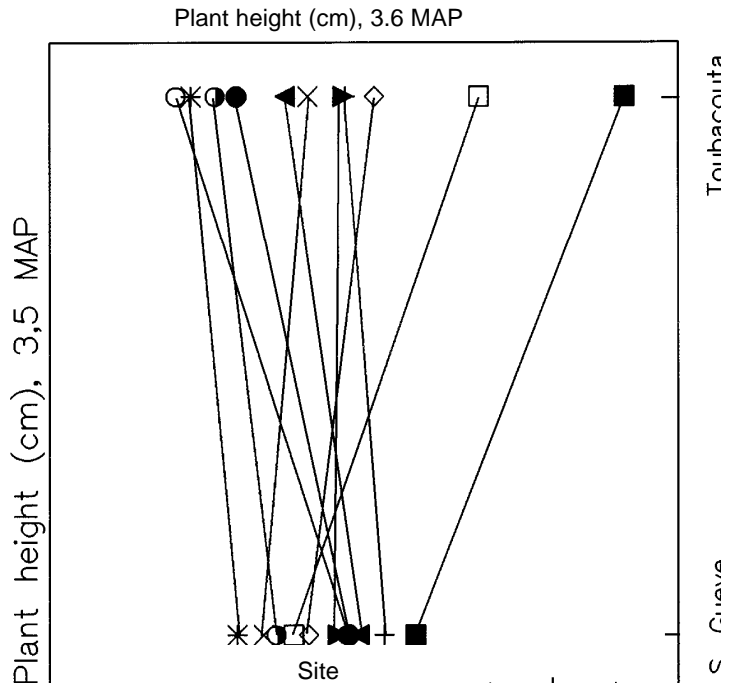


Fig. 7. Genotype-environment-interaction: Plant height (cm) of provenances at Samba Gueye and Toubacouta, 3.6 MAP (for provenances see Table 2).

fore, be considered nearly identical. The Toubacouta location showed better soil properties than the Samba Gueye location, to which some provenances reacted specifically. On Cape Verde, GxE was not significant, with the differences between the two sites probably greater than in Senegal.

Table 4. Descriptive statistical values of phenological traits and yield and yield components for 11 provenances evaluated in Samba Gueye, Senegal (Heller 1992).

Character	Min.	Max.	Mean	SE ¹	CV ²
Vegetative development					
Plant height (cm), 3.7 MAP ³	93.4	105.1	98.2	1.8	1.8
Plant height (cm), 10.9 MAP	121.0	135.1	129.9	2.9	2.3
Plant height (cm), 15.3 MAP	135.9	155.3	149.8	3.3	2.2
Plant height (cm), 25.3 MAP	152.1	185.2	173.6	4.1	2.3
Stem diameter (mm), 3.7 MAP	43.4	48.4	45.2	0.6	1.2
Stem diameter (mm), 15.3 MAP	69.3	81.7	74.7	1.8	2.4
No. of branches/plant, 3.7 MAP	3.3	4.5	4.2	0.3	6.8
No. of branches/plant, 15.3 MAP	4.9	6.3	5.5	0.2	3.8
Average length of branches/ plant (mm)	257.9	503.5	416.5	26.7	22.3
Generative development (7.9 MAP)					
No. of capsules/shrub	4.86	9.30	6.72	1.14	17.01
Wt. of capsules/shrub (g)	3.58	15.00	11.00	1.99	17.81
Wt./capsule (g)	1.52	1.92	1.66	0.09	5.56
No. of seeds/shrub	3.84	19.58	13.71	2.38	17.34
Wt. of seeds/shrub (g)	2.40	9.60	6.72	1.30	19.37
1000-seed weight (g)	417	575	494.4	22.60	4.60
No. seeds/capsule	1.90	2.15	2.05	0.09	4.36
Prop. seeds capsule (%)	57.70	65.40	60.90	1.90	3.10
Shrubs with yield, (%) of survived	48.0	93.3	81.80	5.60	6.90
Generative development (25.3 MAP)					
No. of capsules/shrub	0.20	9.00	3.91	1.61	41.11
Wt. of capsules/shrub (g)	0.52	15.72	6.09	2.90	47.54
Wt./capsule (g)	1.38	1.75	1.52	0.09	6.14
No. of seeds/shrub	0.60	17.80	6.98	3.29	47.11
Wt. of seeds/shrub (g)	0.32	9.22	3.48	1.69	48.55
1000-seed weight (g)	476	525	490.6	23.90	4.90
No. of seeds/capsule	1.55	1.96	1.75	0.10	5.67
Prop. seeds capsule (%)	53.50	59.60	56.60	1.70	3.10
Shrubs with yield, (%) of survived	20.40	94.50	71.40	6.80	9.50

¹ SE = standard error.

² CV = coefficient of variation.

³ MAP = months after planting.

No interaction could be tested between provenances at all four locations, due to the great differences in precultivation between Senegal and Cape Verde. The absolute growth height cannot, therefore, be used as a parameter to characterize specific adaptation of provenances to test sites. The provenances were ranked with regard to plant height (Fig. 8). The various locations can be graded according to their positive action on growth. Certain provenances indicated good or bad adaptation to certain sites (Fig. 8).

Yield and yield components were analyzed at Samba Gueye, 7.9 and 25.3 MAP. Parameters showed a wide variation (Table 4). No significant differences were determined for the parameters of weight per capsule (7.9 and 25.3 MAP), number of seeds per capsule and proportion of seeds in the capsule (7.9 and 25.3 MAP) and no differences were found in the 1000-seed weight at the second harvest (25.3 MAP). In the rest of their yield parameters (number and weight of capsules per shrub, number and weight of seeds per shrub (at 7.9 and 25.3 MAP) and 1000-seed weight at 25.3 MAP), provenances differed significantly. Plants on Cape Verde did not reach the generative stage. This was due to both the lower rainfall and the insufficient precultivation period.

With both harvests, the seed yield per shrub was very low, with a maximum of 9.6 g for the provenance Benin at 7.9 MAP and 9.2 g for the provenance Burkina Faso at 25.3 MAP. The provenance Burma showed lowest seed yields, combined with best vegetative development. The low yields at 25.3 MAP may have been due to high precipitation

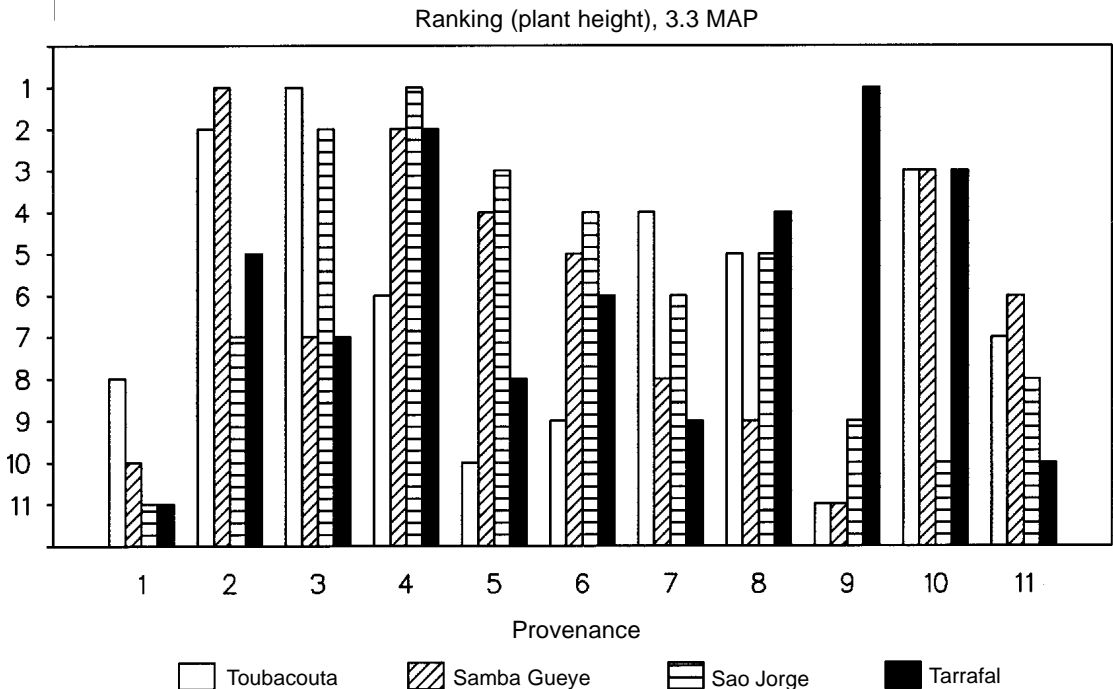


Fig. 8. The ranking of provenances by plant height at trial locations after the first rainy season, 3.3 MAP (for provenances see Table 2).

in the previous rainy season, which may have caused strong vegetative development at the expense of seed yields. Yields, on a hectare basis, were very low. None of the provenances tested in Heller's trials reached the values reported for Thailand by Sukarin *et al.* (1987) and Stienswat *et al.* (1986).

The contents of the original seed and harvest at Toubacouta were determined. The crude fat content is an important component of the oil yield per hectare; crude fibre and protein content are of importance for eventual use as seed cake in animal nutrition, as are crude protein and mineral content (P, Ca, Mg, Na and K) for utilization as fertilizer. With all parameters determined, analytic results showed a wide range between the different provenances. Crude fat content of the original seed ranged from 28.4 to 42.3%, with that of the harvest at Toubacouta varying between 23.2 and 38.3% (Table 5). On average, these values are in accordance with those determined by Ferrao and Ferrao (1981, 1984) and Ferrao *et al.* (1982) for samples from Cape Verde (Fogo and Santiago) and Sao Tomé and Príncipe.

Table 5. Composition (%) of seeds (dry matter) of the original seed and one harvest at Toubacouta of 13 provenances (Heller 1992).

Character	Min.	Max.	Mean	SE ¹	CV ²
Original seed					
Crude fat	28.4	42.3	35.6	-	-
Crude fibre	24.4	30.8	28.2	-	-
Crude protein	13.7	22.4	19.0	-	-
Ash	3.6	5.2	4.6	-	-
P	0.45	0.76	0.61	-	-
Ca	0.27	0.80	0.47	-	-
Mg	0.36	0.46	0.42	-	-
Na	0.021	0.057	0.040	-	-
K	0.74	1.39	1.03	-	-
Harvest at Toubacouta					
Crude fat	23.2	38.3	31.9	-	-
Crude fibre	25.1	35.8	31.4	-	-
Crude protein	12.4	20.0	15.9	-	-
Ash	4.2	5.7	4.9	-	-
P	0.54	0.68	0.65	-	-
Ca	0.43	0.66	0.55	-	-
Mg	0.39	0.45	0.44	-	-
Na	0.054	0.22	0.118	-	-
K	0.70	1.22	0.97	-	-

¹ SE = standard error.

² CV = coefficient of variation.

The calculation of correlations of the different parameters for the harvest at Toubacouta showed significant correlations between nearly all parameters. A highly significant positive relationship exists between the 1000-seed weight, crude fat and crude fibre content, while the 1000-seed weight correlates negatively with crude fibre and ash content. Ferrao and Ferrao (1984) found highly significant correlations between seed samples from Sao Tomé and Príncipe for the 1000-seed weight and percent of crude fat content.

These provenance trials show, even in this limited survey, phenotypic variation. The selection, however, was probably too small as provenances from the centre of origin were not well represented. In addition, the time frame was too short for an assessment of the yield potential of the physic nut. The seeds utilized in the trials could not be collected by Heller himself at the locations. Collectors were requested to collect from a minimum of four healthy plants, representative of the population. However, this could not be verified. According to Burley and Wood (1976), samples should be collected from a larger number of trees. Thus, the samples received for the trials should not be considered representative of the population.

Nevertheless, some interesting aspects were evident. By recording vegetative development, Heller (1992) discovered the existence of genotypes specifically adapted to marginal conditions or which show strong vegetative growth during youth. This could be of importance for establishing pioneer vegetation on very marginal sites, as well as plantations to control erosion and supply mulching material, without considering seed-production aspects. The first seed yields were very low, but showed a great range. Long-term determinations are necessary, however, to estimate the yield potential. Differences in the 1000-seed weight of provenances cultivated at the same location were slight, whereas crude fat contents varied greatly. Significant positive correlations between the 1000-seed weight and percentage of crude fat content indicate interesting possibilities for selection, if genotypes exist where these are combined with high yields. The variability of the toxic contents of the provenances was not examined in these trials. Recent research by Becker (pers. comm.) confirmed the variability in toxic contents.

Conservation of physic nut

Physic nut is conserved in only three institutions. Three provenances from Costa Rica are maintained as field collections at the CATIE, Costa Rica. The Centre National de Semences Forestières (CNSF) in Burkina Faso has 12 provenances from Burkina Faso under medium-term storage conditions (see Appendix I). These were collected mainly from two areas in Burkina Faso. The INIDA, Cape Verde still maintains the field collection established as a provenance trial by Heller (1991) in 1987 (Jose G. Levy 1996, pers. comm.). The existing genetic variation of physic nut is not represented in the collections, as the centre of origin is represented with only five provenances from two countries.

Physic nut is conserved on-farm in the centre of origin and other regions, because it is used as a hedge. As this cultivation system does not seem to change, it can be assumed that genetic erosion is not important at present. It is questionable whether there is any need to conserve more provenances *ex situ*. However, there is no survey on the extent to which existing diversity is maintained in hedges. As the centre of origin still has to be

ascertained and the diversity in these areas to be assessed, strategies for *in situ* conservation cannot yet be developed.

Germplasm used in afforestation programmes in different countries (India, Mali) uses only locally available material. By doing so, good opportunities might have been missed for using material with higher yield potential or with more desirable characteristics.

Seed storage behaviour of Euphorbiaceae is generally orthodox according to Ellis *et al.* (1985) (one exception being *Hevea*). Orthodox seed storage behaviour means "Mature whole seeds not only survive considerable desiccation (to at least 5% moisture content) but their longevity in air-dry storage is increased in a predictable way by reduction in seed storage moisture content and temperature (e.g. to those values employed in long-term seed stores)" (Hong *et al.* 1996). Physic nut also has orthodox seeds. Two- or six-month-old seeds received for the provenance trials described above, were stored in unsealed plastic bags at ambient temperatures (approximately 20°C) for 5 months and germinated on average by 62% (ranging from 19 to 79%) after having been seeded in soil. When stored for 7 years in plastic bags (not sealed) at a temperature of approximately 16°C, the seeds still showed an average germinating capacity of 47% (ranging from 0 to 82%) when tested with the "between paper" method (Heller, pers. comm.). When the seeds were analyzed for their chemical composition after 3 years of storage, they had a moisture content of 6.2% (average of all provenances).

Kobilke (1989) investigated the viability of seeds of different ages (1 to 24 months) that were collected directly from the sites or stored for a certain time. Seeds older than 15 months showed viabilities below 50%. One explanation for this rapid decrease is that these seeds remained at the site, having been exposed for long periods to extreme changes in levels of humidity and temperature.

High levels of viability and low levels of germination shortly after harvest indicate innate (=primary) dormancy. This behaviour has also been reported for other Euphorbiaceae (Ellis *et al.* 1985). Kobilke (1989) also tried to break induced dormancy. Intervals of presoaking and drying or partial removal of the testa proved more successful than presoaking alone.

8 Breeding

Breeding objectives

Breeding objectives will depend on use. Oil yield will, in most cases, be the most important part of physic nut cultivation. Components that contribute to physic nut oil yield per hectare are: number of pistillate flowers per inflorescence and subsequent number of capsules per shrub, number of seeds per capsule, 1000-seed weight, oil content of seeds (%) and plants per hectare. As the maximum number of seeds per capsule is limited and the agronomic factor of planting density does not offer much flexibility for increasing yields, selection should focus on the other yield components.

Ferrao and Ferrao (1984), and later Heller (1992), found highly significant correlations in different seed samples between the 1000-seed weight and percent of crude fat content. This might be interesting from the breeders' point of view, as simple selection for high 1000-seed weight could imply increased crude fat contents. From this, it cannot be concluded that shrubs which produce seeds of a high 1000-seed weight, and consequently a higher crude fat content, will yield more oil per hectare. A high 1000-seed weight can also be the consequence of a low seed yield per shrub. Further research on this is required.

Other important objectives are reduced plant height to facilitate harvesting of capsules and development of non toxic cultivars, where the seed cake could be used as fodder.

Breeding method

As the physic nut is a cross-pollinated crop, any genetic improvement has to be based on populations. Mass selection would be the simplest breeding method, where superior selected plants are composited. Populations can be stepwise improved if they remain large, so that additive genetic variation can be used. The method of recurrent selection is widely used in forest tree breeding. This involves concurrent cycles of selection with or without progeny tests. There are possibilities for the breeder to modify the method. In addition, hybrid cultivars could be bred to use the heterosis effect. The existence of male sterile cultivars as reported by Foidl (pers. comm.) would facilitate crossings.

Dehgan (1984) found that emasculation was not necessary for hybridization in the insect-free greenhouse. The reason for this was the absence of insect vectors and the time lag of anthesis of staminate flowers. The standard routine of bagging should be sufficient in the field. However, to avoid self-pollination if staminate and pistillate flowers were to open simultaneously – physic nut is self-compatible – emasculation could be required. This can be achieved very easily as staminate and pistillate flowers look very distinct. Dehgan's (1984) extensive trials on interspecific hybridization were aimed at investigating phylogenetic affinities in *Jatropha*. The findings on the crossability of 20 species in the two subgenera are very interesting if such crossings were desired for breeding. All F₁ hybrids, except *J. curcas* x *multifida*, were more vigorous than the parental species. In most of the successful crossings, the physic nut was involved as the maternal parent and barriers to interspecific compatibility with other *Jatropha* sections are demonstrated.

Selection based on provenance trials

The aim of a provenance trial is to estimate the differences between populations or environments relative to their productivity. This is often pursued to produce a base population for breeding. Burley and Wood (1976) describe exact methods for forest trees in their "Manual on species and provenance research with particular reference to the tropics". These methods are no doubt also applicable to shrubs such as physic nut, although the test phases are shorter. Species and provenance trials contribute fundamental information for large-scale afforestation in the tropics. At present, there is no alternative to such trials on representative sites (Burley and Wood 1976). Afforestation on the basis of provenance trials alone can, with certain species, improve productivity by 50% (Zobel *et al.* 1988). Systematic provenance trials at different locations have not yet been carried out with the physic nut to the necessary extent, and material from the centre of origin has not been sufficiently screened. The genetic background of the physic nut grown in Africa and Asia is unclear. It is not known from which genetic basis it derives or how wide the genetic basis of plants is in those areas.

Provenance trials are usually carried out at several sites. Certain provenances may differ relatively from others if cultivated at different sites, which is due to GxE interaction. Ranking of families, provenances or species can change completely, or a change of productivity without inversion of ranking can take place with a change in location (Namkoong *et al.* 1988; Zobel *et al.* 1988). Zobel *et al.* (1988) described many examples of tropical forest trees, with interaction being significant in some cases. A GxE interaction also occurred in trials with physic nut (Heller 1992). Additional well-planned provenance trials would make it possible to select provenances better adapted to local conditions.

9 Production areas

The cultivation of physic nut was of economic importance in Cape Verde. Silveira (1934) estimated that 8000 ha were planted with physic nut, which represented 12% of the islands' total surface or 16% of their cultivated area. The whole seed production was exported to Lisbon for oil extraction and soap production. Maximum exports from Cape Verde were 5622 t in 1910 and 4457 t in 1955. Exports of seed contributed in certain years for up to 60% of the total monetary value of the island's agricultural exports (Fig. 9). Seeds have not been exported since 1970, in spite of the fact that old plantations still exist and there has been a new reforestation effort with physic nut. Apart from Cape Verde, physic nut was cultivated only in some countries of West Africa and Madagascar for seed exports to Marseille. Plantations established recently in different countries had varying objectives:

- reforestation for erosion control in Cape Verde
- erosion control with hedges and combined oil production (diesel fuel) in Mali
- oil production on 10 000 ha in marginal areas of India (Patil and Singh 1991).
- establishment of 1200 ha of physic nut energy plantation for production of methyl esters in Nicaragua (Foidl, pers. comm.).

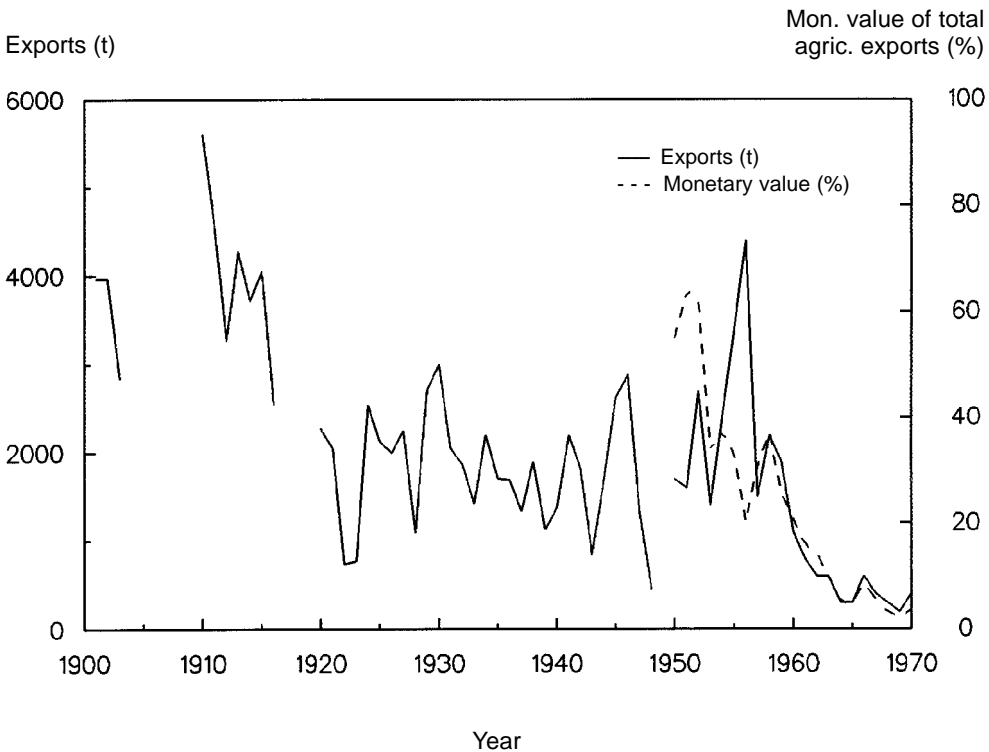


Fig. 9. Export of physic nut seeds from Cape Verde during the period 1900-1970 (Silveira 1934; Grillo 1951).

10 Ecology

Like many other *Jatropha* species, physic nut is a succulent that sheds its leaves during the dry season. It is, therefore, best adapted to arid and semi-arid conditions. Most *Jatropha* spp. occur in the following seasonally dry areas: grassland-savanna (cerrado), thorn forest scrub and caatingas vegetation, but are completely lacking from the moist Amazon region (Dehgan and Schutzman 1994). The current distribution of physic nut shows that introduction has been most successful in drier regions of the tropics with an average annual rainfall of between 300 and 1000 mm. Good examples are Cape Verde and Mali. Münch (1986) reports that physic nut even withstood years without rainfall in Cape Verde. However, it also grows successfully with higher precipitations.

As physic nut occurs mainly at lower altitudes (0-500 m), it can be concluded that it is adapted to higher temperatures. The areas where it has been collected in the centre of origin and from where the material was taken for provenance trials show average annual temperatures well above 20°C and up to 28°C. Physic nut withstood slight frost in the Chã das Caldeiras, Fogo (approximately 1700 m altitude) (Kiefer 1986). It is not sensitive to daylength.

It grows on well-drained soils with good aeration and is well adapted to marginal soils with low nutrient content. On Cape Verde, the physic nut is found especially in the stony “ribeiras” i.e. dry stream courses (Fig. 10a), and on rocky slopes where it is spread by seeds. In heavy soils, root formation is reduced. Physic nut is a highly adaptable species, but its strength as a crop comes from its ability to grow on poor, dry sites.

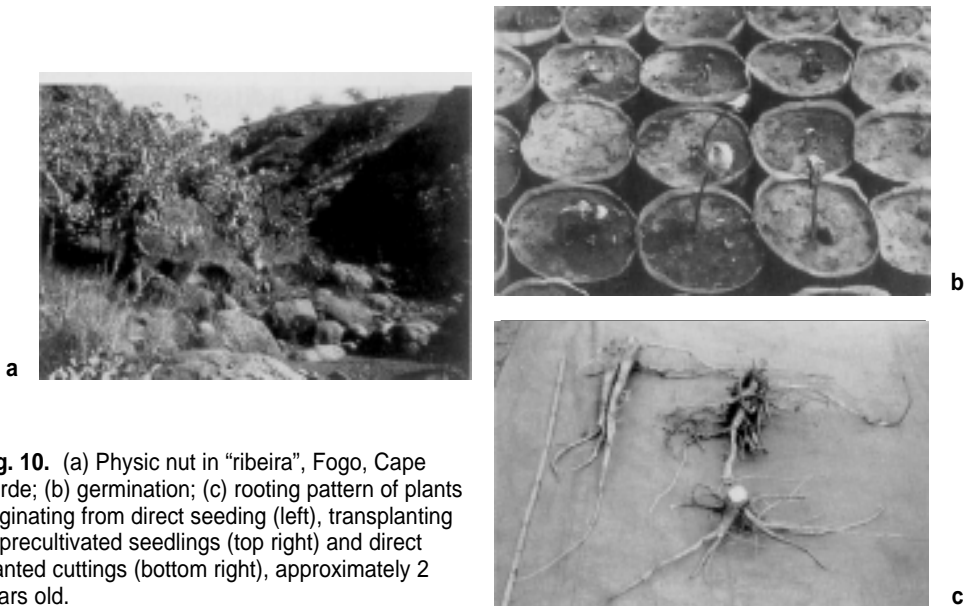


Fig. 10. (a) Physic nut in “ribeira”, Fogo, Cape Verde; (b) germination; (c) rooting pattern of plants originating from direct seeding (left), transplanting of precultivated seedlings (top right) and direct planted cuttings (bottom right), approximately 2 years old.

11 Agronomy

Growth and development

With good moisture conditions, germination needs 10 days (Fig. 10b). The seed shell splits, the radicle emerges and four little peripheral roots are formed. Soon after the development of the first leaves, the cotyledons wither up and fall off. Further growth is sympodial. With seeding in the month of May, a stem length of 1 m was reached in Thailand after 5 months of growth (Sukarin *et al.* 1987). A terminal flower was formed. The authors observed two flowering peaks, one in November and the other in May. In permanently humid equatorial regions, flowering occurs throughout the year. Fruit development needs 90 days from flowering until seeds mature. Further development corresponds to rainy seasons: vegetative growth during the rainy season and little increment during the dry season. Old plants can reach a height of up to 5 m. With good rainfall conditions, nursery plants bear fruit after the first rainy season, with directly seeded plants bearing for the first time after the second rainy season. With vegetative propagation, the first seed yield is higher.

Table 6. Seed yield of the physic nut (per shrub and hectare).

Reference	Location	Age (years)	Yield	
			Shrub (g)	Hectare (kg)
Avila (1949)	Cape Verde	?	700-900	n.d. ¹
Bhag Mal (pers. comm.)	India	3	n.d.	1733
Foidl (pers. comm.)	Nicaragua	?	n.d.	5000
Henning (pers. comm.) ²	Mali	?	n.d.	2640
Ishii and Takeuchi (1987)	Thailand	?	n.d.	2146
Larochas (1948)	Mali	?	n.d.	8000
Martin and Mayeux (1984)	Madagascar	?	3000-3500	n.d.
Matsuno <i>et al.</i> (1985)	Paraguay	3	n.d.	100
Matsuno <i>et al.</i> (1985)	Paraguay	4	n.d.	700
Matsuno <i>et al.</i> (1985)	Paraguay	5	n.d.	1000
Matsuno <i>et al.</i> (1985)	Paraguay	6	n.d.	2000
Matsuno <i>et al.</i> (1985)	Paraguay	7	n.d.	3000
Matsuno <i>et al.</i> (1985)	Paraguay	8	n.d.	4000
Matsuno <i>et al.</i> (1985)	Paraguay	9	n.d.	4000
Naigeon (1987)	Cape Verde	?	n.d.	1750
Silveira (1934)	Cape Verde	?	n.d.	200-800
Stienswat <i>et al.</i> (1986)	Thailand	1	318	794
Sukarin <i>et al.</i> (1987)	Thailand	1	63.8	n.d.
Zan (1985)	Burkina Faso	diff.	955	n.d.

¹ n.d. = not determined.

² Survey on hedges: 0.8 kg seeds per m hedge. Hectare yield assumes a distance of 3 m between the hedges.

Reports in the literature on physic nut yields are contradictor. Table 6 lists the seed yields per shrub and hectare in different countries. In most cases, information on the age and propagation method of the plants, variation between years are missing. At least 2-3 t of seeds/ha can be achieved in semi-arid areas. The fruit is harvested by hand and fruit hulls and seeds are separated manually. The best pickers in Nicaragua harvest up to 30 kg of fruits hour, which would mean approximately 18 kg of seeds.

Freitas (1906) reported two harvest times, corresponding to the flowering times. Observations of other authors showed that the main harvest occurs several months after the end of the rainy season, since flowering is connected to vegetative development. The physic nut can reach an age of about 50 years (Larochas 1948; Takeda 1982).

Propagation methods

Avila (1949) and Freitas (1906) have described several traditional propagation methods on Cape Verde: direct seeding, precultivation of seedlings, transplanting of spontaneous wild plants and direct planting of cuttings. All possibilities for crop establishment are listed below (Münch 1986; Kobilke 1989).

Generative propagation (seeds)

- Direct seeding
- Transplanting of precult. plants
 - * seed bed (bare roots)
 - * container

Vegetative propagation (cuttings)

- Direct planting
- Transplanting of precultivated plants
 - * seed bed (bare roots)
 - * container

Factors influencing crop establishment of plants propagated by different methods are:

Generative propagation (seeds)

- direct seeding – seeding depth, date and quality of the seed
- transplanting – type and length of precultivation, planting date

Vegetative propagation (cuttings)

- direct planting – character of cuttings (length, diameter, age), cutting time, storage, fungicide treatment, planting time and depth
- transplanting – as with direct planting of cuttings and precultivation of seeds.

Not all factors are of equal importance. Successful precultivation is characterized by high germination rates of seeds, high sprouting rates of cuttings and survival. Basing the propagation method on rainfall conditions plays a decisive role in the survival and properties of the plant in the field.

Comparative research on the influence of different propagation methods on survival and vegetative development was conducted by Kobilke (1989) in Cape Verde and by Heller (1992) in Senegal in nearly identical trials. The following methods were tested: direct

and vegetative development was conducted by Kobilke (1989) in Cape Verde and by Heller (1992) in Senegal in nearly identical trials. The following methods were tested: direct seeding; transplanting of bare root plants (precultivated in seed bed or in the wild); transplanting of plants with root ball (precultivated in polyethylene bags); transplanting of precultivated cuttings and direct planting of cuttings.

The survival rate at Sao Jorge, Cape Verde, was significantly higher than that obtained using corresponding methods in Senegal. The ranking of various treatments with respect to survival rate did not change for the different locations. Both vegetative cultivation methods and methods of generative precultivation were more successful than direct seeding (Fig. 11). Since interaction was not significant, the different environments had no specific influence on the plants propagated by different methods.

Differences in seed yields between different propagation methods could not be determined in this trial because the observation period was too short. However, in another experiment designed by Heller (1992) in Senegal in 1987, to compare direct seeding, transplanting of seedlings and direct planting of cuttings of different diameters, differences in seed yields were detected. The first seed yield of cuttings of >30 mm diameter was significantly higher than that of precultivated plants (Fig. 12). No significant differences were found between precultivated plants and the other two treatments or among the cutting treatments. In the second harvest no significant differences could be determined.

In another series of trials, Kobilke (1989) and Heller (1992) investigated the influence of planting time, cutting length, storage and fungicide application on the survival and dry matter accumulation of cuttings planted directly. Thitithanavanich (1985) investi-

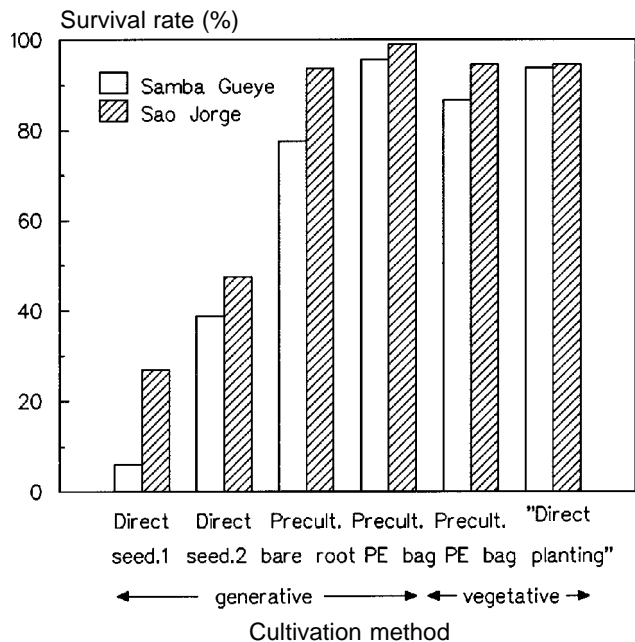


Fig. 11. Comparison of survival rates (%) of plants propagated by different methods at Samba Gueye and Sao Jorge, 1988 (Kobilke 1989; Heller 1992).

gated the root formation of physic nut cuttings of different diameters (1, 2 and 3 cm) and lengths (15 and 30 cm) in the nursery bed. Thicker cuttings formed more roots than the thinner ones. Cuttings of 30-cm length developed more roots and their survival rate was higher than cuttings of 15-cm length. Narin-Sombunsan and Stienswat (1983) showed that treating cuttings with IBA (indole-butyric acid) hormone did not promote root formation. The rooting of stem cuttings is influenced more by rooting media; good aeration and drainage proved profitable. According to Hartmann and Kester (1983), the following two factors are generally responsible for sprouting: the age of the plant from which cuttings are taken and the position of the cutting within the plant.

Factors responsible for the survival of direct seeding (seeding time, seeding depth) were studied by Heller (1992). Based on yearly averages, the low survival rates for direct seeding (19.8%) are striking, whereas the same provenance seeded in polyethylene bags for provenance trials showed a germination of 68%. The survival rate depended not only on sowing time and depth of sowing, but also on the trial year. No statements can be made on the occurrence of water stress shortly after seeding, since soil moisture was not determined. The trials confirmed that seeding should be done when rainfall is certain, after the beginning of the rainy season. Thus, seeding depends very much on timing. These research results are explained in more detail in Heller (1991, 1992).

When establishing a physic nut crop, the survival rate can be influenced by the choice of cultivation method. In addition to costs and a fixed agricultural working calendar, the intended utilization of a plantation must be taken into consideration when selecting the cultivation method. For the quick establishment of hedges and plantations for erosion control, directly planted cuttings are best suited; for long-

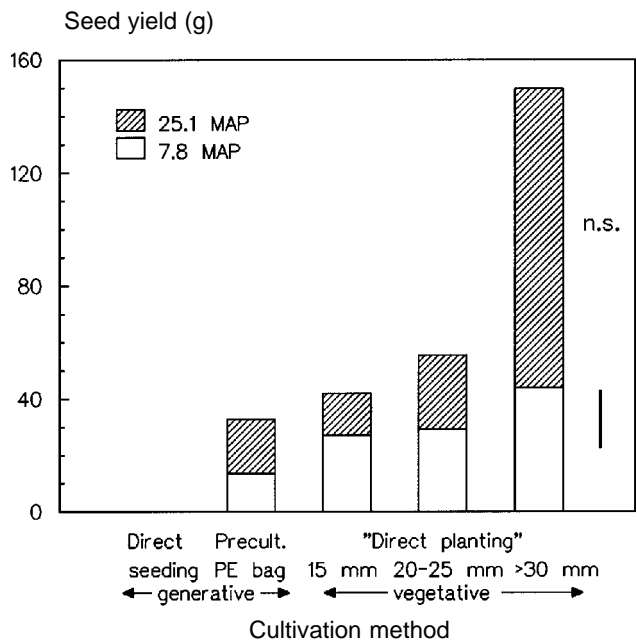


Fig. 12. Seed yield (g per shrub) of plants propagated by different methods at Samba Gueye, 7.8 and 25.1 MAP ($P = 0.05$, Tukey).

lived plantations for vegetable oil production, plants propagated by seeds are better. However, if early seed yields are desired in such plantations, directly planted stakes could also be used. With better rainfall conditions, the plantation could also be established by direct seeding, if higher maintenance work (weeding) can be guaranteed. For the quick propagation of selected mother plants, the vegetative method of precultivating cuttings in Rigi pots is more suitable.

As an alley crop in the conventional sense, where the effect of nutrient pump is of interest, the non-leguminous physic nut is not appropriate. But under certain circumstances, physic nut alleys could function as windbreaks for annual cultures during their establishment phase, as Banzhaf (1988) demonstrated with windbreak strips of fallow vegetation. At the same time, an energy component could be integrated into the cropping system. The planting of physic nut hedges reduces the cultivation area, and thus the yield per hectare of the annual crop. Felske (1991) investigated possibilities for integrating physic nut into annual crop production systems. Pruning of hedges to reduce shading of neighbouring crops and to facilitate harvesting is common in Mali.

In association with annual crops, the root system of the physic nut is of special importance. The tap root of directly seeded plants probably competes less with the roots of the annual crop than the root system of precultivated plants, propagated by seeds, or cuttings planted directly. The different development of root systems is shown in Figure 10c. Differences observed in first seed yields of differently propagated plants probably will disappear some years after planting. The type of root system probably influences the longevity of plants under stress conditions.

The above statements show the influence of various factors on survival. According to Avila (1949), satisfactory planting widths are 2 x 2, 2.5 x 2.5 and 3 m x 3 m. This is equivalent to crop densities of 2500, 1600 and 1111 plants/ha. Plants propagated by cuttings show a lower longevity and possess a lower drought and disease resistance than plants propagated by seeds. Stienswat *et al.* (1986) investigated the influence of different crop densities (2 x 2, 2 x 1.5, 2 x 1 and 2 m x 0.5 m) on the vegetative development and first seed yield of 13 to 14-month-old shrubs in Thailand. The plants set widest apart had the best vegetative development and the highest seed yields (794 kg/ha and 318 g/shrub, respectively). On sloped semi-arid sites, reforestation with shrubs or trees is normally done in catchments, to improve the water supply for the plants and for better erosion control. Avila (1949) also recommended reforestation in catchments. Goor and Barney (1968) and Lamprecht (1986) gave detailed recommendations for afforestation on arid sites. Large-scale plantations are only appropriate for marginal lands on which annual food crops cannot be produced. If high pressure for arable land exists, the physic nut would normally be planted as a hedge to fence in fields.

Pests and diseases

Several pests and diseases have been reported for physic nut (Table 7).

Some pests and diseases were observed by the author in Senegal. Physic nut suffers

The ecological conditions in Zimbabwe are probably not favourable and plants are stressed (Harris, pers. comm.). In other countries, pests and diseases do not cause severe problems although millipedes can cause total loss of young seedlings. These seedlings are also susceptible to competition from weeds during their early development. Therefore weed control, either mechanical or with herbicides, is required during the establishment phase. The project in Nicaragua investigated the pest, diseases and weed control in physic nut (Foidl, pers. comm.).

Table 7. Pests and diseases observed on physic nut plants by different authors.

Name	Damage and symptoms	Source
<i>Phytophthora</i> spp., <i>Pythium</i> spp., <i>Fusarium</i> spp., etc.	damping off, root rot	Heller (1992)
<i>Helminthosporium tetramera</i>	leaf spots	Singh (1983)
<i>Pestalotiopsis paraguayensis</i>	leaf spots	Singh (1983)
<i>Pestalotiopsis versicolor</i>	leaf spots	Phillips (1975)
<i>Cercospora jatrophae-curces</i>	leaf spots	Kar and Das (1987)
<i>Julus</i> sp. (millipede)	total loss of seedlings	Heller (1992)
<i>Oedaleus senegalensis</i> (locust)	leaves, seedlings	Heller (1992)
Lepidopterae larvae	galleries in leaves	Heller (1992)
<i>Pinnaspis strachani</i> (cushion scale)	die-back of branches	van Harten, pers. comm.
<i>Ferrisia virgata</i> (wooly aphid)	die-back of branches	van Harten, pers. comm.
<i>Calidea dregei</i> (blue bug)	sucking on fruits	van Harten, pers. comm.
<i>Nezara viridula</i> (green stink bug)	sucking on fruits	van Harten, pers. comm.
<i>Spodoptera litura</i>	larval feeding on leaves	Meshram and Joshi (1994)

12 Limitations of the crop

The only real limitation of this crop is that the seeds are toxic and the press cake cannot be used as a fodder (see chapter 5). The press cake can only be used, therefore, as organic manure. The low yields revealed in several projects may have been caused by the fact that unadapted provenances had been used. If investigation of its genetic diversity and its yield potential had been covered by adequate scientific research, this problem could have been overcome.

13 Prospects

Physic nut is well adapted to marginal areas with poor soils and low rainfall, where it grows without competing with annual food crops, thus filling an ecological niche. It is widely distributed in the tropics and is already used to a certain extent. Any further promotion of its use would, therefore, be facilitated by this. The species has numerous uses and in their combination lies the potential of this crop. The most important is the combination of erosion control and oil production. The use of the oil as a substitute for diesel fuel and for soap production in rural areas would improve the living conditions of the people and would offer additional income.

As physic nut is not browsed by cattle, it can grow without protection and can be used as a hedge to protect fields. The use of different propagation methods means that appropriate methods can be selected according to labour, costs and desired type of plantation. Living fences can be established very quickly by planting cuttings directly in the field. The harvest of physic nut seeds fits perfectly into the agricultural calendar in Mali: the main seed harvest is in August/September; millet is harvested in October. All parts of the plant are used in traditional medicine and active components are being investigated in scientific trials. Several ingredients appear to have promising applications both in medicine and as a plant protectant.

14 Research needs

An analysis of the research undertaken with the physic nut to date reveals the following research priorities:

- Systematic collecting of physic nut germplasm in the centre of origin
 - Identification of provenances with desirable characteristics according to use through characterization and evaluation: drought resistance, desired growth habit, seed yield, oil content, non-toxicity (fodder) or high toxic content (pesticide)
 - Investigation of the genetic distinctness of physic nut in the centre of origin and other regions where it has been introduced by electrophoretic and molecular methods
 - Investigation of the taxonomic status of existing plantations
 - Investigation of the agronomic potential of other *Jatropha* spp., e.g. *Jatropha canescens*
 - Initiation of a selection/breeding programme with multilocation testing of promising provenances
 - Research on medical and insecticidal properties of seed components for development of products
 - Influence of pruning on seed yields
 - Economic analysis of seed oil production in rural areas for diesel fuel and soap production
 - Economic analysis of the fertilizer value of the seed cake
 - Development of methods for detoxification of the seed cake
 - Socioeconomic studies on how physic nut can aid development in local communities.
-

Bibliography

- Abdu-Aguye, I., A. Sannusi, R.A. Alafiya-Tayo and S.R. Bhusnurmath. 1986. Acute toxicity studies with *Jatropha curcas*. *Human Toxicol.* 5(4):269-274.
- Adam, S.E.I. and M. Magzoub. 1975. Toxicity of *Jatropha curcas* for goats. *Toxicology* 4:347-354.
- Adolf, W., H.J. Opferkuch and E. Hecker. 1984. Irritant phorbol derivatives from four *Jatropha* species. *Phytochemistry* 23(1):129-132.
- Agaceta, L.M., P.U. Dumag, J.A. Atolos and F.C. Bandiola. 1981. Studies on the control of snail vectors of fascioliasis. Molluscicidal activity of some indigenous plants. National Science Development Board (NSDB). *Technol. J. (Philippines)* 6(2):30-34.
- Ahmed, O.M.M. and S.E.I. Adam. 1979. Effects of *Jatropha curcas* on calves. *Vet. Pathol.* 16:476-482.
- Andrade, F.J.L. 1978. Estudo prévio de industrialização da purgueira (*Jatropha curcas* L.) em Cabo Verde. Diploma thesis. Instituto Superior de Agronomia, Universidade Técnica de Lisboa.
- Anon. 1993. Diesel fuel substitute for all diesel engines made from vegetable oil. Schur-Process, Bad Urach, Germany (unpublished).
- Aponte, C. Hernández. 1978. Estudio de *Jatropha curcas* L. como recurso biotico. Diploma thesis. University Veracruz, Xalapa-Enríquez, Veracruz, Mexico.
- Avila, J. Goulart de. 1949. Breves instruções para a cultura da purgueira. Colonia de Cabo Verde. Repartição Técnica dos Serviços Agrícolas, Florestais e Pecuários. Imprensa Nacional de Cabo Verde, Praia.
- Banerji, R., A.R. Chowshury, G. Misra, G. Sudarsanam, S.C. Verma and G.S. Srivastava. 1985. *Jatropha* seed oils for energy. *Biomass* 8:277-282.
- Banzhaf, J. 1988. Auswirkungen von Windschutzstreifen aus Brachlandvegetation auf Wachstum und Ertragsbildung von Perlhirse (*Pennisetum americanum* (L.) Leeke) und Cowpea (*Vigna unguiculata* (L.) Walp.) im südlichen Sahel Westafrikas. Ph.D. Dissertation. University Hohenheim, Stuttgart.
- Ben Salem, B. and C. Palmberg. 1985. Place and role of trees and shrubs in dry areas. Pp. 93-102 in *Plants for Arid Lands: Proceedings of the Kew International Conference on Economic Plants for Arid Lands*. Jodrell Laboratory, Royal Botanic Gardens, Kew, England, 23-27 July 1984 (G.E. Wickens, J.R. Goodin and D.V. Field, eds.). George Allen & Unwin, London.
- Buchanan, R.A., I.M. Cull, F.H. Otey and C.R. Russell. 1978. Hydrocarbon- and rubber-producing crops. Evaluation of U.S. plant species. *Econ. Bot.* 32:131-145, 146-153.
- Budowski, G. 1987. Living fences in tropical America, a widespread agroforestry practice. Pp. 169-178 in *Agroforestry Realities, Possibilities and Potentials* (H.L. Gholz, ed.). Martinus Nijhoff, Dordrecht.
- Burkill, I.H. 1966. A dictionary of the economic products of the Malay peninsula. Vol. II. Ministry of Agriculture, Kuala Lumpur.
- Burley, J. and P.J. Wood. 1976. A manual on species and provenance research with particular reference to the Tropics. *Tropical Forestry Papers* No. 10. Department of Forestry, Commonwealth Forestry Institute. University of Oxford.
- Cabral, A. Lemos de. 1964. Utilização do óleo de Purgueira como combustível (Nota preliminar). *Missão de Estudos Agronômicos do Ultramar* (Junta de Investigação do Ultramar). Comunicação n.º. 46.
- Carr M.E., B.S. Philipps and M.O. Bagby. 1985. Xerophytic species evaluated for renewable energy resources. *Econ. Bot.* 39(4):505-513.
- Chelmicki, J.C.C. de and F.A. de Varnhagen. 1841. *Corografia Cabo-Verdiana ou Descrição Geographico-Historica da Provincia das Ilhas de Cabo-Verde e Guiné*. Tomo II. Typ. de L.C. da Cunha, Lisbon.
-

- Chen, M. J., L. L. Hou, and G. W. Zhang. 1988. The diterpenoids from *Jatropha curcas* L. *Acta Bot. Sin.* 30(3):308-311.
- Co, L.L. and Y.B. Taguba. 1984. Common medicinal plants of the Cordillera Region (Northern Luzon, Philippines). Community Health Education, Services and Training in the Cordillera Region (CHESTCORE), Baguio City, Philippines.
- Correll, D.S. and H.B. Correll. 1982. Flora of the Bahama Archipelago. J. Cramer, Vaduz.
- Cossel, J.D. von, H.J. Lehmann and H.R. Schütz. 1982. Seifenherstellung auf der Basis von Purgeira-Öl. Integrierte Entwicklungsmaßnahmen für die Inseln Fogo und Brava/Kap Verde. Consultant's report prepared for GTZ, Germany.
- Crothers, M. 1994. Physic nut (*Jatropha curcas* L.). Agnote no. 583. Northern Territory Department of Primary Industry and Fisheries (Australia).
- Davis, J.B., D.E. Kay and V. Clark. 1983. Plants tolerant of arid, or semi-arid, conditions with non-food constituents of potential use. Report of the Tropical Products Institute, London, G 150.
- Dehgan, B. 1984. Phylogenetic significance of interspecific hybridization in *Jatropha* (Euphorbiaceae). *Syst. Bot.* 9(4):467-478.
- Dehgan, B. and B. Schutzman. 1994. Contributions toward a monograph of neotropical *Jatropha*: phenetic and phylogenetic analyses. *Ann. Miss. Botanic Garden* 81:349-367.
- Dehgan, B. and G.L. Webster. 1979. Morphology and infrageneric relationships of the genus *Jatropha* (Euphorbiaceae). University of California Publications in Botany, Vol. 74.
- Delgado Montoya, J.L. and E. Parado Tejada. 1989. Potential multipurpose agroforestry crops identified for the Mexican Tropics. Pp. 166-173 in *New Crops for Food and Industry* (G.E. Wickens, N. Haq and P. Day, eds.). Chapman and Hall, London.
- Demant, A. and M. Gajo. 1992. Wirtschaftlichkeitsbetrachtung zur Förderung des Erosionsschutzes durch Produktion und Nutzung von Purgieröl als Kraftstoff im Sahel am Beispiel von Mali. Study prepared by Environmental Concept, Berlin for Deutsche Gesellschaft für Technische Zusammenarbeit (GTZ) GmbH, Eschborn.
- Diallo, N. 1994. Trees and hedges in the agricultural systems in Faranah prefecture. *Flamboyant* 31:24-29.
- Droit, S. 1932. Recherches sur la graine et l'huile de Purghère ou Pignon d'Inde (*Jatropha curcas* L.). Dissertation. Université de Paris, Faculté de Pharmacie, Paris.
- Duke, J.A. 1985. CRC Handbook of Medicinal Herbs. CRC Press Inc., Boca Raton, FL.
- Elisabetsky, E. and A. Gely. 1987. Plantes médicinales utilisées en Amazonie comme fond potentiel de nouveaux agents thérapeutiques dans les cas d'allergie, thrombose et inflammation. *J. Agric. Tradit. Bot. Appl.* 34:143-151.
- El-Badwi, S.M.A., S.E.I. Adam and H.J. Hapke. 1995. Comparative toxicity of *Ricinus communis* and *Jatropha curcas* in Brown Hisex chicks. *Dtsch. Tierärztl. Wochenschr.* 102(2):75-77.
- Ellis, R.H., T.D. Hong and E.H. Roberts. 1985. Handbooks for Genebanks No. 3. Handbook of Seed Technology for Genebanks. Vol. II. Compendium of Specific Germination Information and Test Recommendations. International Board for Plant Genetic Resources, Rome.
- Empereire, L. and F. Pinton. 1986: Dona Flora et les cajous. Deux systèmes agricoles au sudest du Piauí (Brésil). *J. Agric. Tradit. Bot. Appl.* 33:193-212.
- Esteves, A. Baiao. 1960. Anteprojecto de uma instalação de extracção de óleo de purgueira em Cabo Verde. *Missao de Estudos Agronómicos do Ultramar*, no. 6.
- FAKT. 1992. Testing the aptitude of an oil expeller for processing of physic nut. Short study for GTZ. Fördergesellschaft für angepaßte Technologien in der Dritten Welt mbH (Association for Appropriate Technologies in the Third World), Furtwangen.

- FAKT. no date. Upgrading of the screw expeller for village scale oilprocessing. Project description. Fördergesellschaft für angepaßte Technologien in der Dritten Welt mbH (Association for Appropriate Technologies in the Third World), Furtwangen.
- Felke, J. 1913. Über die Giftstoffe der Samen von *Jatropha curcas*. Landw. Vers. Stat. 82:427-467.
- Felske, W. 1991. Untersuchungen zur Nutzung der Purgiernuß im "alley cropping" System. Diploma thesis. University Hohenheim, Stuttgart.
- Ferrao, J.E.M. and A.M.B.C. Ferrao. 1981. Purgueira de Cabo Verde composição da semente. Algumas características da gordura. Rev. Port. Bioquim. 4:17-24.
- Ferrao, J.E.M. and A.M.B.C. Ferrao. 1984. Contribuição para o estudo da semente de Purgueira (*Jatropha curcas* L.) de S. Tomé e Príncipe. 1AS. Jornadas de Engenharia dos Países de Língua Oficial Portuguesa (Lisboa), Tema 1, Comunicação 36.
- Ferrao, J.E.M., A.M.B.C. Ferrao and M.T.S. Patricio. 1982. Purgueira da Ilha do Fogo. Composição da semente, algumas características da gordura. Universidade Tecnica de Lisboa, Instituto Superior de Agronomia, Secção de Agronomia Tropical. Estudos No. 14.
- Fleuret, A. 1980. Nonfood uses of plants in Usambara. Econ. Bot. 34(4):320-333.
- Fojas, F.R., L.L. Garcia, E.L. Venzon, F.M. Sison, B.A. Villanueva, A.J. Fojas and I. Llave. 1986. Pharmacological studies on *Jatropha curcas* as a possible source of anti-arrhythmic (beta-blocker) agent. Philipp. J. Sci. 115(4):317-328.
- Freitas, A.S. Barjona de. 1906. A Purgueira e o seu oleo. Dissertation. Instituto de Agronomia e Veterinaria, Lisboa.
- Garcia, R.P. and P. Lawas. 1990. Note: Potential plant extracts for the control of *Azolla* fungal pathogens. Philipp. Agric. 73(3/4):343-348.
- Goonasekera, M.M., V.K. Gunawardana, K. Jayasena, S.G. Mohammed and S. Balasubramanian. 1995. Pregnancy terminating effects of *Jatropha curcas* in rats. J. Ethnopharmacol. 47(3):117-123.
- Goor, A.Y. and C.W. Barney. 1968. Forest Tree Planting in Arid Zones. Second edition. The Ronald Press Company, New York.
- Grainge, M. and S. Ahmed. 1988. Handbook of Plants with Pest-control Properties. John Wiley & Sons, New York.
- Griffiths, G., A. Leith and M. Green, M. 1987. Proteins that play Jekyll and Hyde. New Scientist 16 July 1987:59-61.
- Grillo, F. Monteiro. 1951. Notas sobre a economia de Cabo Verde. Culturas industriais. Cabo Verde - Bol. de Propaganda e Informação 3(27):2-4.
- Gupta, R.C. 1985. Pharmacognostic studies on 'Dravanti'. Part I *Jatropha curcas* Linn. Proc. Indian Acad. Sci. (Plant Sci.) 94(1):65-82.
- Hartmann, H.T. and D.E. Kester. 1983. Plant Propagation. Principles and Practices. 4th edition. Prentice-Hall Inc., Englewood Cliffs.
- Heller, J. 1991. Investigation of the genetic potential and improvement of cultivation and propagation practices of physic nut (*Jatropha curcas* L.). Final report submitted to Deutsche Gesellschaft für Technische Zusammenarbeit (GTZ) GmbH (German Agency for Technical Cooperation), Eschborn.
- Heller, J. 1992. Untersuchungen über genotypische Eigenschaften und Vermehrungs- und Anbauverfahren bei der Purgiernuß (*Jatropha curcas* L.) [Studies on genotypic characteristics and propagation and cultivation methods for physic nuts (*Jatropha curcas* L.)]. Dr. Kovac, Hamburg.
- Hemming, C.F. and A. Radcliffe-Smith. 1987. A revision of the Somali species of *Jatropha* (Euphorbiaceae). Kew Bull. 42:103-122.
- Henning, R. 1994. 1. fachlicher Zwischenbericht zum Projekt: Produktion und Nutzung von Pflanzenöl als Kraftstoff. PN 93.2202.5-01.100. Projet Pourghère DNHE - GTZ, Bamako, Mali.
-

- Henning, R. and K. von Mitzlaff. 1995. Produktion und Nutzung von Purgieröl als Kraftstoff und Rohstoff für die lokale Seifenherstellung im Sahel. Pp. 137-151. in *Nachwachsende Rohstoffe aus den Tropen und Subtropen für die Tropen und Subtropen*, 22. Witzenhäuser Hochschulwoche (R. Krause and C. Schellert, eds.) Der Tropenlandwirt, Beiheft No. 53.
- Henning, R., F. Samaké and I. Thiéro. 1995. La valeur fertilisante du tourteau du pourghère. Projet Pourghère DNHE - GTZ, Bamako, Mali.
- Henning, R. 1996. Combating desertification - Fuel from *Jatropha* plants. In UNIDO Symposium on development and utilization of biomass energy resources in developing countries, Vienna, Dec. 1995. UNIDO, Environment and Energy Branch, Industrial Sectors and Environment Division, Vienna, Austria. (in press)
- Henning, R. and S. Kone. no date. Le pourghère au Mali. Enquêtes sur les activités précédentes d'utilisation énergétiques de l'huile de pourghère. Deutsche Gesellschaft für Technische Zusammenarbeit (GTZ), Programme Spécial Energie, Mali.
- Holla, K.S., R.H. Millwalla, A.D. Shitole, N.S.S. Rajan and N.S. Sunder-Rajan. 1993. Tallow substitute from ratanjyot oil (*Jatropha curcas*). J. Oil Technol. Assoc. India 4:75-77.
- Hong, T.D., S. Linington and R.H. Ellis. 1996. Seed Storage Behaviour: a Compendium. IPGRI, Rome. (in press).
- Horiuchi, T., H. Fujiki, H. M. Hirota, M. Suttajit, M. Sukanuma, A. Yoshioka, V. Wongchai, E. Hecker and T. Sugimura. 1987. Presence of tumor promoters in the seed oil of *Jatropha curcas* L. from Thailand. Jpn. J. Cancer Res. (Gann) 78:223-226.
- Irvine F.R. 1961. Woody Plants of Ghana with Special Reference to their Uses. Oxford University Press, London.
- Isawumi, M.A. 1978. Nigerian chewing sticks. The Nigerian Field 43(3):111-121.
- Ishii, Y. and R. Takeuchi. 1987. Transesterified curcas oil blends for farm diesel engines. Trans. Am. Soc. Agric. Eng. 30(3):605-609.
- Jadhav, K.B. and L.D. Jadhav. 1984. Use of some vegetable oils, plant extracts and synthetic products as protectants from pulse beetle, *Callosobruchus maculatus* Fabr. in stored gram. J. Food Sci. Technol. 21:110-113.
- Joubert, P. H., J. M. M. Brown, I. T. Hay, and P. D. B. Sebata. 1984. Acute poisoning with *Jatropha curcas* purging nut tree in children. S. Afr. Med. J. 65(18):729-730.
- Juillet, A., J. Susplugas and J. Courp. 1955. Les oléagineux et leurs tourteaux. Botanique - caractères - préparation - emplois. Editions Paul Lechevalier, Paris.
- Kar, A.K. and Ashok Das. 1988. New records of fungi from India. Indian Phytopathol. 41(3):505.
- Kerharo, J. and J.G. Adam. 1974. La pharmacopée sénégalaise traditionnelle. Plantes Médicales et Toxiques. Editions Vigot Frères, Paris.
- Kiefer, J. 1986. Die Purgiernuß (*Jatropha curcas* L.) - Ernteprodukt, Verwendungsalternativen, wirtschaftliche Überlegungen. Diploma thesis University Hohenheim, Stuttgart.
- Kobilke, H. 1989. Untersuchungen zur Bestandesbegründung von Purgiernuß (*Jatropha curcas* L.). Diploma thesis. University Hohenheim, Stuttgart.
- Kone-Bamba, D., Y. Pelissier, Z.F. Ozoukou and D. Ouao. 1987. Etude de l'activité hémostatique de quinze plantes médicinales de la "Pharmacopée Traditionnelle Ivoirienne". Plant. Méd. Phytothér. 21(2):122-130.
- Lamprecht, H. 1986. Waldbau in den Tropen. Die tropischen Waldökosysteme und ihre Baumarten - Möglichkeiten und Methoden zu ihrer nachhaltigen Nutzung. Verlag Paul Parey, Hamburg.
- Larochas, L. 1948. Les huiles siccatives de l'industrie française. Le Pourghère. Oléagineux

3(6/7):321-328.

- Le Houérou, H.N. 1989. The shrublands of Africa. Pp. 119-143 in *The Biology and Utilization of Shrubs* (C.M. McKell, ed.). Academic Press, San Diego.
- Lentz, D. L. 1993. Medicinal and other economic plants of the Paya of Honduras. *Econ. Bot.* 47(4):358-370.
- Leon, J. 1987. *Botánica de los cultivos tropicales*. Instituto Interamericano de Cooperación para la Agricultura, San José, Costa Rica.
- Levingston, R. and R. Zamora. 1983. Medicine trees of the Tropics. *Unasylva* 35(140):7-10.
- Liberalino, A.A.A., E.A. Bambirra, T. Moraes-Santos and E.C. Vieira. 1988. *Jatropha curcas* L. seeds: chemical analysis and toxicity. *Arq. Biol. Tecnol.* 31(4):539-550.
- Linnaeus, C. 1753. *Species plantarum*. *Jatropha* pp. 1006-1007. *Impensis Laurentii Salvii*, Stockholm.
- Lippmann, A. 1913. Zwei Fälle von schwerer Vergiftung durch Curcasnüsse. *Medizinische Klinik* No. 13:500-501.
- Liu, S.Y., F. Sporer, M. Wink, J. Jourdane, R. Henning, Y.L. Li and A. Ruppel. (in press). Anthraquinones in *Rheum palmatum* and *Rumes dentatus* and phorbolsters in *Jatropha curcas* with molluscicidal activity against the schistosome vector snails *Oncomelania*, *Biomphalaria* and *Bulinus*. *Trop. Med. and Paras.*
- Lutz, A. 1992. Vegetable oil as fuel. An environmentally and socially compatible concept for Mali. *gate* 4/92:38-46.
- Mabberley, D.J. 1987. *The Plant Book*. Cambridge University Press, Cambridge.
- Manandhar, N.P. 1995. An inventory of some herbal drugs of Myadi district, Nepal. *Econ. Bot.* 49(4):371-379.
- Martin, G. and A. Mayeux. 1984. Réflexions sur les cultures oléagineuses énergétiques. II. - Le Pourghère (*Jatropha curcas* L.): un carburant possible. *Oléagineux* 39(5):283-287.
- Matsuno, T., U. Ohsawa, H. Toyohara and K. Nishiyama. 1985. Investigation of oil plants and characteristics of some oil plant seeds. *J. Agric. Sci., Japan* 29(3):160-174.
- McLaughlin, S.P. and J.J. Hoffmann. 1982. Survey of biocrude-producing plants from the Southwest. *Econ. Bot.* 36(3):323-339.
- McVaugh, R. 1945. The genus *Jatropha* in America: principal intrageneric groups. *Bull. Torrey Bot. Club* 72:271-294.
- Mensier, P.H. and M. Loury. 1950. Les utilisations de l'huile de Pourghère. *Oléagineux* 5(3):167-170.
- Meshram, P.B. and K.C. Joshi. 1994. A new report of *Spodoptera litura* (Fab.) Boursin (Lepidoptera: Noctuidae) as a pest of *Jatropha curcas* Linn. *Indian Forester* 120(3):273-274.
- Moreira, I. 1970. Bagaços de purgueira e de ricino. Ensaio sobre a sua fitotoxicidade e valor fertilizante. *An. Inst. Super. Agron. (Portugal)* 31:191-222.
- Muanza, D.N, K.L. Euler, L. Williams and D.J. Newman. 1995. Screening for antitumor and anti-HIV activities of nine medicinal plants from Zaire. *Int. J. Pharmacognosy* 33(2):98-106.
- Münch, E. 1986. *Die Purgiernuß (Jatropha curcas L.) - Botanik, Ökologie, Anbau*. Diploma thesis. University Hohenheim, Stuttgart.
- Naengchomng, W., Y. Thebtaranonth, P. Wiriyachitra, K.T. Okamoto and J. Clardy. 1986. Isolation and structure determination of four novel diterpenes. *Tetrahedron Letters* 27(22):2439-2442; 27(47):5675-5678.
- Nageon, C. 1987. Pourghère, graine de relance. *Inter Tropiques* 7(22):25-27.

- Namkoong, G., H.C. Kang and J.S. Brouard. 1988. Tree breeding: Principles and Strategies. Monographs on Theoretical and Applied Genetics. Vol. 11. Springer Verlag, New York.
- Narin-Sombunsan and Watna Stienswat. 1983. Effect of IBA on root formation of stem-cutting of purging nut (*Jatropha curcas* L.) [in Thai]. Faculty of Agriculture, Dept. of Horticulture, Kasetsart University, Bangkok, Thailand.
- Nasir, M. K. A., Memon, G. M., Valhari, M. V., Khatri, L. M. 1988. Studies on fixed oil of *Jatropha curcas* seeds. Pak. J. Sci. Ind. Res. 31(8):566-568.
- Nath, L. K. and S. K. Dutta. 1992. Wound healing response of the proteolytic enzyme curcain. Indian J. Pharmacol. 24(2):114-115.
- Nielsen, P.E., H. Nishimura, J.W. Otvos and M. Calvin. 1977. Plant crops as a source of fuel and hydrocarbon-like materials. Science 198:942-944.
- Ochse, J.J. 1931. Vegetables of the Dutch East Indies. A. Asher and Co., Hacquebard, Amsterdam (reprinted 1980).
- Okoth, V.A.G. 1991. Whitefly as a vector of African cassava mosaic virus (ACMV). Namulonge research Station, Ministry of Agriculture, Animal Industry and Fisheries, Kampala.
- Oliver-Bever, B.E.P. 1986. Medicinal Plants in Tropical West Africa. Cambridge University Press, Cambridge.
- Ouedraogo, M., P.D. Ayers and J.C. Linden. 1991. Diesel engine performance tests using oil from *Jatropha curcas* L. Agric. Mechanization in Asia, Africa and Latin America 22(4):25-32.
- Pak, M. and A. Allexi. 1994. Testing engines fuelled with physic oil. Landtechnik (Germany) 49(1):29-30.
- Panigrahi, S., B.J. Francis, L.A. Cano and M.B. Burbage. 1984. Toxicity of *Jatropha curcas* seeds from Mexico to rats and mice. Nutr. Rep. Int. 29(5):1089-1099.
- Patil, V. and K. Singh. 1991. Oil gloom to oil boom. *Jatropha curcas* a promising agro-forestry crop. Shree Offset Press, Nashik.
- Pax, F. 1910. Euphorbiaceae-Jatropheae. Pp. 1-148 in Das Pflanzenreich IV. 147(42) (A. Engler, ed.). Verlag von Wilhelm Engelmann, Leipzig.
- Persinos, G.J., M.W. Quimby and J.W. Schermerhorn. 1964. A preliminary pharmacognostical study of ten Nigerian plants. Econ. Bot. 18(4):329-341.
- Phillips, S. 1975. A new record of *Pestalotiopsis versicolor* on the leaves of *Jatropha curcas*. Indian Phytopathol 28 (4):546.
- Quisumbing, E. 1978. Medicinal Plants of the Philippines. Katha Publishing Co. Inc., JMC Press Inc., Quezon City, Philippines.
- Rehm, S. and G. Espig, 1991. The cultivated plants of the Tropics and Subtropics. Verlag Josef Margraf, Weikersheim.
- Rug, M., F. Sporer, M. Wink, S.Y. Liu, R. Henning and A. Ruppel. 1996. Molluskizide Wirkung von *Jatropha curcas* - Samen gegen Überträgerschnecken von *Schistosoma mansoni* und *S. japonicum*. Poster, 17. Conference of Deutsche Gesellschaft für Parasitologie e. V., 27-29 March 1996, München.
- Sauerwein, M., F. Sporer and M. Wink. 1993. Insect-toxicity of phorbol esters from *Jatropha curcas* seed oil. Planta Medica 59(7):686.
- Schultze-Motel, J. 1986. Rudolf Mansfelds Verzeichnis landwirtschaftlicher and gärtnerischer Kulturpflanzen (ohne Zierpflanzen). Akademie-Verlag, Berlin.
- Serra, M.C.P. 1950. O valor da purgueira na economia de Cabo Verde. Rev. Ultramar 3(17):9, 16.
- Shelke, S.S., L.D. Jadhav and G.N. Salunkhe. 1985. Ovipositional and adult repellent action of some vegetable oils/extracts against potato tuber moth. J. Maharashtra Agric. Univ. 10(3):284-286.

- Sherchan, D.P., Y.B. Thapa, R.J. Khadka and T.P. Tiwari. 1989. Effect of green manure on rice production. PAC Occasional Paper. No. 2, 12 p. Pakhribas Agricultural Centre. Dhankuta, Koshi Zone, Nepal.
- Siegel, A. 1893. Ueber die Giftstoffe zweier Euphorbiaceen. Ph.D. Dissertation. Medicinal Faculty. Imperial University Dorpat.
- Silveira, J.C. da. 1934. Contribution à l'étude du Pulghère aux îles du Cap Vert. An. Inst. Super. Agron. (Lisboa) 6(1):116-126.
- Singh, R.P. 1970. Structure and development of seeds in Euphorbiaceae, *Jatropha* species. Beitr. Biol. Pflanz. 47:79-90.
- Singh, I.D. 1983. New leaf spot diseases of two medicinal plants. Madras Agric. J. 70(7):490.
- Solsoloy, A.D. 1993. Insecticidal activity of the formulated product and aqueous extract from physic nut, *Jatropha curcas* L. seed kernel oil on cotton insect pests. Cotton Res. J. 6(1/2):28-34.
- Solsoloy, A.D. 1995. Pesticidal efficacy of the formulated physic nut, *Jatropha curcas* L. oil on pests of selected field crops. Philipp. J. Sci. 124(1):59-74.
- Solsoloy, A.D., N.A. Dumlao and T.S. Solsoloy. 1987. Insecticidal activity of indigenous plant extracts against bollworms (*Helicoverpa armigera* Hubn.). Technical report CY (calendar year) 1985-86:175-184. Cotton Research and Development Inst., Batac, Ilocos Norte, Philippines.
- Spaak, J. D. 1990. Boiser les Iles du Cap-Vert - pourquoi, comment, pour qui? Bois For. Trop. 225:47-54.
- Standley, P.C. and J.A. Steyermark. 1949. Flora of Guatemala. Fieldiana: Botany 24, VI (Chicago Natural History Museum).
- Stienswat, W., S. Rattanaserikiat and S. Nimunchat. 1986. The studies on growing of physic nut (*Jatropha curcas*) in the large test plot. Research reports on growing of physic nut (*Jatropha curcas*) for diesel fuel substitute [in Thai]. Kasetsart University, Bangkok, Thailand.
- Stirpe, F., A. Pession-Brizzi, E. Lorenzoni, P. Strocchi, L. Montanaro and S. Sperti. 1976. Studies on the proteins from the seeds of *Croton tiglium* and of *Jatropha curcas*. Toxic properties and inhibition of protein synthesis in vitro. Biochem. J. 156:1-6.
- Sukarin, W., Y. Yamada and S. Sakaguchi. 1987. Characteristics of physic nut, *Jatropha curcas* L. as a new biomass crop in the Tropics. Jpn. Agric. Res. Quart. (Japan) 20(4):302-303.
- Takeda, Y. 1982. Development study on *Jatropha curcas* (sabu dum) oil as a substitute for diesel engine oil in Thailand. J. Agric. Assoc. China 120:1-8.
- Teixeira, J.P.F. 1987. Teor e composicao do oleo de sementes de *Jatropha* spp. Bragantia (Campinas) 46(1):151-157.
- Thitithanavanich, B. 1985. The effect of diameter and length of stem-cuttings on root production of physic nut (*Jatropha curcas* L.) [in Thai]. Kasetsart University, Bangkok, Thailand.
- Thomas, O.O. 1989. Re-examination of the antimicrobial activities of *Xylopiya aethiopica*, *Carica papaya*, *Ocimum gratissimum* and *Jatropha curcas*. Fitoterapia 60(2):147-155.
- Van den Bergh, J. 1985. Deux arbustes d'avenir pour vaincre l'avance du desert. Afr. Agric. 113:40-45.
- Vassiliades, G. 1984. Notes sur les propriétés molluscicides de deux Euphorbiacées: *Euphorbia tirucalli* et *Jatropha curcas*. Essais en laboratoire. Rév. Elev. Méd. Vét. Pays Trop. 37(1):32-34.
- Vöhringer. 1987. Untersuchungszeugnis für Futtermittel. Landwirtschaftliche Untersuchungs- und Forschungsanstalt, Bonn.
- Wang, S.-C. and J.B. Huffman. 1981. Botanochemicals: Supplements to petro-chemicals.

- Econ. Bot. 35(4), 369-382.
- Weiss, E. 1989. Guide to Plants Tolerant of Arid and Semi-arid Conditions: Nomenclature and Potential Uses. Margraf, Weikersheim.
- Wiehr, E. 1930. Beiträge zur Kenntnis der Anatomie der wichtigsten Euphorbiaceensamen unter besonderer Berücksichtigung ihrer Erkennungsmerkmale in Futtermitteln. Ph.D. Dissertation. Mathematical-Natural Scientific Faculty, University Hamburg.
- Wilbur, R.L. 1954. A synopsis of *Jatropha*, subsection *Eucurcas*, with the description of two new species from Mexico. J. Elisha Mitchell Sci. Soc. 70:92-101.
- Wink, M. 1993. Forschungsbericht zum Projekt "Nutzung pflanzlicher Öle als Kraftstoffe. Consultant's report prepared for GTZ, Germany.
- Zan, T. 1985. Le *Jatropha curcas* et le *Jatropha gossypifolia* sous différentes conditions climatiques du Burkina Faso: Cultures et exploitations. Diploma thesis. Institut Supérieur Polytechnique, Université de Ouagadougou.
- Zobel, B.J., G. van Wyk. and P. Stahl. 1988. Growing Exotic Forests. John Wiley & Sons. New York.

A. Further reading (not cited in the text)

- Anon. 1988. Do miracle plants exist? Spore 16:1-3.
- Jones, N. and J. H. Miller. 1992. *Jatropha curcas*: a multipurpose species for problematic sites. Land Resources Series No.1. Asia Technical Department, World Bank, Washington.
- Münch, E. and J. Kiefer. 1989. Die Purgiernuß (*Jatropha curcas* L.). Mehrzweckpflanze als Kraftstoffquelle der Zukunft. Schriftenreihe der GTZ (Germany) v. 209.
- Paroda, R.S. and Bhag Mal. 1989. New plant sources for food and industry in India. Pp. 135-149 in New Crops for Food and Industry (G.E. Wickens, N. Haq and P. Day, eds.). Chapman and Hall, London.
- Roorda, F.A. 1991. *Jatropha curcas* - Pourghère. A review article. Royal Tropical Institute, Amsterdam.
- Vidal, V.A. Canhoto, J.E.M. Ferrao, J.J.L. Xabregas and E.L.P. Coutinho. 1962. Oleaginosas do Ultramar Portugues. Vol. 2. Mem. Junta Invest. Ultramar (Lisboa) n°. 31:129-145.

B. Sources for distribution of physic nut

- Adams, C.D. 1972. Flowering Plants of Jamaica. University of the West Indies, Mona, Jamaica.
- Anon. 1979. Flora of Taiwan. Vol. 6. Epoch Publishing Co., Ltd., Taipei, Taiwan.
- Aubréville, A. 1936. La flore forestière de la Côte d'Ivoire. Larose Editeurs, Paris.
- Berhaut, J. 1975. Flore illustrée du Sénégal. Dicotylédones. Tome III Connaracées à Euphorbiacées. Gouvernement du Sénégal, Ministère du Développement Rural et de l'Hydraulique, Direction des Eaux et Forêts, Dakar.
- Brako, L. and J.L. Zarucchi. 1993. Catalogue of the flowering plants and Gymnosperms of Peru. Mon. in Syst. Bot. from the Missouri Bot. Garden Vol. 45.
- Burkill, I.H. 1966. A Dictionary of the Economic Products of the Malay Peninsula. Ministry of Agriculture and Co-operatives, Kuala Lumpur.
- Correll, D.S. and H.B. Correll. 1982. Flora of the Bahama Archipelago. J. Cramer, Vaduz.
- Drake de Castillo, E. 1886. Illustrationes Florae Insularum Maris Pacifici. Venit Apud G. Masson, Paris. (reprint 1977, J. Cramer, Vaduz).
- Fouqué, A. 1982. Les plantes médicinales présentes en forêt Guayanaise. Fruits 37(1).
- Grierson, A.J.C. and D.G. Long. 1987. Flora of Bhutan including a Record of Plants from Sikkim. Vol. 1, part 3. Royal Botanic Garden, Edinburgh.

- Heyne, K. 1950. De nuttige planten van Indonesië. Deel 1, 3e Druk. N.V. Uitgeverij W. van Hoeve, The Hague/Bandung.
- Hooker, J.D. 1886-1890. The Flora of British India. Vol. V. Chenopodiaceae to Orchideae. L. Reeve & Co., London.
- Howard, R.A. 1989. Flora of the Lesser Antilles. Leeward and Windward Islands. Vol. 5 Dicotyledonae - part 2. Arnold Arboretum, Harvard University; Jamaica Plain, Massachusetts.
- Hsuan Keng. 1990. The Concise Flora of Singapore. Gymnosperms and Dicotyledons. Singapore University Press, National University of Singapore.
- Hutchinson J. and J.M. Dalziel. 1954. Flora of West Tropical Africa. Crown Agents for Oversea Governments and Administrations, Millbank, London.
- Irvine, F.R. 1930. Plants of the Gold Coast. Oxford University Press, Humphrey Milford, London.
- Kabele Ngiefu, C., C. Paquot and A. Vieux. 1977. Les plantes à huile du Zaïre III. - Familles botaniques fournissant des huiles d'insaturation relativement élevée. *Oléagineux* 32(12):535-537.
- Koorders, S.H. 1912. Exkursionsflora von Java umfassend die Blütenpflanzen mit besonderer Berücksichtigung der im Hochgebirge wildwachsenden Arten. Zweiter Band: Dicotyledonen (Archichlamydeae). Verlag von Gustav Fischer, Jena.
- Lanessan, J.-L. de. 1836. Les plantes utiles des colonies Françaises. Imprimerie Nationale, Paris.
- Lemée, A. 1952. Flore de la Guyane Française. Tome II. Imprimerie Commerciale & Administrative, Brest.
- Little, E.L., R.O. Woodbury and F.H. Wadsworth. 1974. Trees of Puerto Rico and the Virgin Islands (2nd vol.). Agric. Handbook No. 449, US Dep. of Agric., Washington, DC.
- MacKee, H.S. 1994. Catalogue des plantes introduites et cultivées en Nouvelle-Calédonie. Museum National d'Histoire Naturelle, Paris.
- Miquel, F.A.W. 1856. Flora van Nederlandisch Indië. C.G. van der Post, Amsterdam; C. van der Post Jr., Utrecht; Fried. Fleischer, Leipzig.
- Mors, W.B. and C.T. Rizzini. 1966. Useful Plants of Brazil. Holden Day Inc., San Francisco, London, Amsterdam.
- Münch, E. 1986. Die Purgiernuß (*Jatropha curcas* L.) - Botanik, Ökologie und Anbau. Diploma thesis. University of Hohenheim, Stuttgart.
- Palgrave, K.C. 1992. Trees of Southern Africa (2nd. edn.). Struik Publishers, Cape Town.
- Pax, F. 1910. Euphorbiaceae - Jatrophae. *In* Das Pflanzenreich IV. 147 (A. Engler, ed.). Verlag von Wilhelm Engelmann, Leipzig.
- Petelot, A. 1954. Les plantes médicinales du Cambodge, du Laos et du Vietnam. Tome III-IV. Amarantacées à Selaginellacées et Supplément. Archives des recherches agronomiques et pastorales au Viêt-Nam No. 22. Etat du Vietnam. Centre National de recherches scientifiques et techniques.
- Raponda-Walker, A. and R. Sillans. 1961. Les plantes utiles de Gabon. Editions Paul Lechevalier, Paris.
- Roose, J.N. 1899. Notes on Useful Plants of Mexico. Contributions from the US National Herbarium V(4).
- Roxburgh, W. 1832. Flora Indica or Description of Indian Plants. Reprint from Carey's edition. Today & Tomorrow's Printers & Publishers, New Delhi.
- Safford, W.E. 1905. The Useful Plants of the Island of Guam. Contributions from the United States National Herbarium Vol. IX.
- Standley, P.C. 1928. Flora of the Panama Canal Zone. Contributions from the United States National Herbarium Vol. 27.
- Standley P.C. and J.A. Steyermark. 1949. Flora of Guatemala. Fieldiana: Botany Vol. 24,

part VI.

Thiselton-Dyer, W.T. (ed.). 1913. Flora of Tropical Africa. Vol. VI. - Section 1. Nyctaginae to Euphorbiaceae. Lovell Reeve & Co., Limited, London.

Thulin, M. (ed.). 1993. Flora of Somalia. Vol. 1 Pteridophyta; Gymnospermae; Angiospermae (Annonaceae-Fabaceae). Royal Botanic Gardens, Kew.

Walker, A. 1930. Plantes oléifères du Gabon. Rev. de Bot. Appl. et d'Agric. Trop. 10:209-215.

Wiggins, I.L. and D.M. Porter. 1971. Flora of the Galápagos Islands. Stanford University Press, Stanford, California.

Williams, R.O. and R.O. Williams. 1951. The Useful and Ornamental Plants in Trinidad and Tobago (4th edn.). Guardian Commercial Printery, Port of Spain, Trinidad.

Williamson, J. 1975. Useful Plants of Malawi. University of Malawi.

Appendix I. Research contacts, centres of crop research, breeding and plant genetic resources of physic nut**Austria**

Sucher and Holzer
Alberstr. 4
8010 Graz
Fax: +43-316-383703

Development project in Nicaragua
(see Nicaragua)

Brazil

Prof. José Roberto Moreira
Biomass Users Network
Rua Francisco Dias Velho, 814
Brooklin Novo
04581-001 Sao Paulo SP

Burkina Faso

Centre National de Semences Forestières
(CNSF)
01 BP 2682
Ougadougou 01
Fax: +226-301232

Germplasm collection for distribution
(12 prov. from Burkina Faso)

Makido Ouedraogo
Institut des Sciences de la Nature et
Institut de Developpement Rural
Université de Ouagadougou
Ouagadougou

Engine tests with transesterified
physic nut oil

Cape Verde

Instituto Nacional de Investigacao
e Desenvolvimento Agrario (INIDA)
CP 84
Praia
Fax: +238-711133

Germplasm collection in field genebank
(13 provenances, see Table 3)

Costa Rica

Centro Agronomico Tropical
de Investigacion y Ensenanza (CATIE)
PO Box 7170
Turrialba
Fax: +506-556-1533

Germplasm collection in field genebank
(3 provenances from Costa Rica)

France

Mr. R. Schilling
 Mr. M. Vaitilingom
 Centre de coopération internationale
 en recherche agronomique
 pour le développement (CIRAD)
 2477, avenue du Val de Montferrand
 BP 5035
 34032 Montpellier Cedex 1
 Fax: +33-67615570

Former IRHO part of CIRAD

Germany

Mr. Stefan Peterlowitz
 Deutsche Gesellschaft für Technische
 Zusammenarbeit (GTZ) GmbH
 OE 4201
 PO Box 5180
 65726 Eschborn
 Fax: +49-6196-79-7165
 Email: GTZ-TTI@geod.geonet.de

Biofuels, engine tests, presses,
 reforestation, project in Mali

Prof. Dr. Klaus Becker
 Institute for Animal Production in the
 Tropics and Subtropics
 University Hohenheim
 PO Box 70562
 70593 Stuttgart
 Fax: +49-711-4593702
 Email: kbecker@uni-hohenheim.de

Fodder, toxicology, detoxification

Prof. Dr. Michael Wink
 Institut für Pharmazeutische Biologie
 Ruprecht-Karls-Universität Heidelberg
 Im Neuenheimer Feld 364
 69120 Heidelberg
 Fax: +49-6221-544884

Toxicology, pesticidal properties

FAKT Büro Furtwangen
 R. Metzler
 Stephan Blattmann Str. 11
 78120 Furtwangen
 Fax: +49-7723-5373

Development of oil presses

Jürgen Gliese
 TBW
 naturger. Technologien, Bau- und
 Wirtschaftsberatung
 Baumweg 16
 60316 Frankfurt/M.
 Fax: +49-69-440049
 Email: tbw@pop-frankfurt.com

Consultant on *Jatropha* system,
 socioeconomy

India

Dr. Sudhir Kochhar
Project Coordinator All India
Coordinated Research Project on
Underutilized Crops
National Bureau of Plant Genetic
Resources (NBPGR)
Pusa Campus
New Delhi - 110 012

Genetic resources

Mr. Vinayak Patil
Agro Forestry Federation Prosper Park
Shringada Talao
Nashik 422 001
Fax: 0253 8097

World Bank project in Maharashtra

Prof. Dr. G.D. Sharma
Dept. Plant Breeding
CCS Haryana Agricultural University
Hisar - 125 00

Adaptive trials

Dr. A.H. Sonone
Plant Breeder
Dept. Botany
Mahatma Phule Agricultural University
Rahuri - 413 722 (Dist. Ahmednagar)

Agronomic trials

Dr. N.H. Patel
Associate Research Scientist
(Plant Breeding)
Regional Research Station
Gujarat Agricultural University
Sardar Krushinagar - 385 506
(Dist. Banaskantha (Via) Ahmedabad
(Gujarat)

Adaptive trials

Dr. K.N. Ganeshiah
Plant Breeder
Dept. Plant Breeding and Genetics
University of Agricultural Sciences
GKVK Campus
Bangalore - 560 065

Adaptive trials

Italy

Dr. Joachim Heller
IPGRI
Via delle Sette Chiese 142
00145 Rome
Fax: +39-6-5750309
Email: J.HELLER@CGNET.COM

Genetic resources, agronomy

Mali

Mr. Reinhard Henning
Projet Pourghère
DNHE - GTZ
BP 134 Bamako
Fax: +223-227184
Email: henning@pourgher.malinet.ml

Biofuel, engine tests, soap production,
presses, erosion control

Nicaragua

Mr. Nikolaus Foidl
Proyecto Biomasa
DINOT/UNI
Apartado Postal 432
Managua
Fax: +505-2-490937
Email: biomasa@nicarao.apc.org.ni

Biofuel, methylesterification,
detoxification of press cake and oil,
pesticidal properties, chemical
composition, agronomic trials, pests,
presses, development of new extraction
(see Appendix II for project publications)

Philippines

Aida D. Solsoloy
Cotton Research and Development
Institute
Batac
Ilocos Norte

Pesticidal properties

Portugal

Prof. J.E. Mendes Ferrao
S. Aut. Agronomia Tropical e Subtropical
Instituto Superior de Agronomia
Universidade Técnica de Lisboa
Tapada da Ajuda
1399 Lisboa CODEX
Fax: +351-1-3635031

Chemical composition

UK

Dr. Phil Harris
The Henry Doubleday Research
Association
Ryton Organic Gardens
Ryton-on-Dunsmore
Coventry CV8 31G
Fax: +44-1203-639229

Evaluation of physic nut projects

USA

Prof. Dr. Bijan Dehgan
Horticultural Systematics Laboratory
Department of Environmental
Horticulture
University of Florida
1545 W.M. Fifield Hall
PO Box 110670
Gainesville, Florida 32611
Fax: +1-904-392-3870
Email: BD@gnv.ifas.ufl.edu

Taxonomy of *Jatropha*, botanical
collection of *Jatropha* spp.

Dr. Norman Jones
Senior Forestry Specialist - AGRAP
The World Bank Group
Washington, DC 20433
Fax: +1-202-522-1142
NJONES@worldbank.org

Genetic resources

Huntington Botanical Gardens
1151 Oxford Road
San Marino
CA 91108

Botanical collection of *Jatropha* spp.

Carl Bielenberg
RFD 1
Marshfield
Vermont 05658
Tel/Fax: +1-802-456-8993

Small-scale presses, oil use in adapted
motors

Zimbabwe

Mr. Geoff Oliver
Plant Oil Producers' Association
PO Box UA 518
Union Avenue
Harare

Adaptive trials

Appendix II. Publications of Proyecto Biomasa, DINOT/UNI, Nicaragua.

Researcher, Institute¹, Date	Publication title
Dr. Charles Aker UNAN León Enero 1993 - Diciembre 1994	Ensayos regionales de Variedades y métodos de siembra
Lic. José Munguía UNAN - León Mayo - 93/Noviembre - 94	El Tempate <i>Jatropha curcas</i> L. y sus insectos asociados en áreas experimentales
Lic. Enilda Cano UNAN - León Enero - 93/Diciembre - 94	Rastreo de parasitoides en el cultivo del Tempate <i>Jatropha curcas</i> L.
Lic. Ricardo García Dr. Charles Aker UNAN - León Noviembre - 92/Diciembre - 94	Polinización y Sistema de apareamiento de <i>Jatropha curcas</i> L.
MSc. Verónica Díaz, Lic. Rebeca Pastora UNAN - León Enero - 93/Diciembre - 94	Caracterización de ADN, genómico de <i>Jatropha curcas</i> L.
Carmén M. Guerrero Rocha, Carol M. Sánchez Tellez, Rosa A. Sáenz Artola UCA Mayo - 92/Julio - 93	Estudio de sensibilización del Cultivo de Tempate (<i>Jatropha curcas</i> L.)
Martha Hilda Blandón, Margarita Aguirre G., Karla V. Amador UCA Febrero - 92/Junio - 93	Estudio de factibilidad del Sistema Agro-Industrial del Tempate (<i>Jatropha curcas</i> L.) como sustituto del Diesel
Sonja Grillenberger, Estudiante Austriaca Agosto - 1993/Enero 1994	Extracción de Látex de algunas Euphorbiaceaeas
Myriam Torres Gaitán UNI. Tesis Junio - 1993/Noviembre - 1993	Diseño General de una maquina descas carilladora de la semilla de Tempate

- Marling Buitrago Santamaría
UNI. Tesis
Septiembre - 1991/Mayo 1992
Diseño general de la maquinaria para el proceso de extracción del aceite de Tempate desde la selección hasta precalentamiento
- Juan Carlos Gutierrez
UNI. Tesis
Junio - 1992/Agosto 1993
Diseño general de una maquina de secado de la semilla de Tempate
- Martha Lidya Torres T., Violeta Carolina Amador Mora
UNI. Tesis
Noviembre - 1992/Junio 1995
Industrialización de la transesterificación del aceite de Tempate
- George Dreischulte, Estudiante Alemán
1989 - 1990
Diseño de un Ensayo de Fertilización
- Francisco López C.
UNI. Tesis Agosto - 1992/Julio 1995
Diseño de un molino para la cáscara del fruto de Tempate
- Manuel Gonzáles Murillo
UNI. Tesis
Agosto - 1993/Julio - 1995
Diseño general de una maquina perfoabonadora de subsuelos para el cultivo del Tempate
- MSc Martha Salamanca
UNAN - León
Enero - 1993/Diciembre - 1993
Identificación taxonómica de los Acaros que se encuentran en el Tempate (*Jatropha curcas* L.) 1992
- Martin Spanzel, Estudiante Austriaco Eva Gutierrez.
UNAN - León
Agosto - 1993/Enero - 1994
Sistema de Riego en Tempate enTelica, León
- Juana Emigdia Ferrufino
UNAN - León
Junio - 1993/Febrero - 1994
Estudio de los depredadores que se encuentran en el cultivo Tempate (*Jatropha curcas* L.)
- Ing. Marlene Vargas
UNAN - León
Abril - 1993/Febrero - 1994
Manejo de maleza en cultivo de Tempate
- Lester Guerrero, Mauricio Alvarez
UNAN - León
Abril - 1993/Febrero - 1994
Estudios preliminares para el establecimiento de un sistema de manejo integrado de plagas subclase Acari en Tempate
- Danilo Padilla
UNAN - León
Abril - 1993/Febrero - 1994
Diagnóstico de las enfermedades del Tempate (*Jatropha curcas* L.) en diferentes localidades de Nicaragua

Ana Julia Vargas UNAN - León Abril - 1993/Febrero - 1994	Establecimiento de un banco de germoplasma
Milena Garmendia UNAN - León Junio - 1993/Febrero - 1994	Patogenicidad de <i>Beauveria bassiana</i> , sobre <i>Pachicoris torridus</i>
Indiana Coronado, Martha Dá vila UNAN - León 1994 - 1995	Fertilización Cultivo de Tempate
Enilda Cano, Mirna Ortiz, Clarisa Cárdenas UNAN - León 1995	Estudio de cría masiva de <i>Crysopepla externa</i> y liberaciones en el campo para el control de <i>Pachicorris torridus</i> en el Tempate
Dpto. Técnico, UCA - Telica León. 1994 - 1995	Relación del sembrado directo de semilla de Tempate en bancales en vivero y plantaciones directas a lugares estables
UCA - Telica León. 1994 - 1995	Formación del árbol de Tempate (<i>Jatropha curcas</i> L.)
María de la Cruz Siles H., Arnulfo Montoya L. BIOMASA 1994 - 1995	Podas del Tempate, Cooperativa "Juan de Dios Muñoz", Nicaragua
Dpto. BIOMASA, Estación Experimental Valle de Sebaco 1994 - 1995	Efecto de bioinsecticida Tempate contra mosca blanca
Dpto. Técnico, UCA - Telica León. 1994 - 1995	Podas del árbol de Tempate (<i>Jatropha curcas</i> L.)
Dpto. Técnico, UCA - Telica León. 1994 - 1995	Productividad de árboles de Tempate, producidos por estacas tiernas y no tiernas
Marlyng Buitrago S. BIOMASA 1993	Cálculos de las humedades de las semillas en el secador solar
Marlyng Buitrago S. BIOMASA 1993	Cálculo de pesos específicos reales del fruto de Tempate Variedad Cabo Verde y Nicaragua
Marlyng Buitrago S. BIOMASA 1994	Curvas de secado de las semillas de Tempate

- Marlyng Buitrago S.
BIOMASA
1993
- Johannes Landbeck, Estudiante
Austriaco
1989 - 1990
- Danilo Padilla
UNAN - León
Mayo - 1991/Septiem. - 1992
- Lilliam Lezama, Xochilt Aguilar
UNAN - León
Mayo - 1992/Septiem. - 1993
- Asdrual Pastora, María José Rosales
UNAN - León
Agosto - 1991/Enero 1993
- Lester Guerrero, Mauricio Alvarez
UNAN - León
Mayo - 1992/Diciembre 1992
- Amando Picado V.
E.A.G. Estelí
1994
- Amando Picado V.
E.A.G. Estelí
1994
- Amando Picado V.
E.A.G. Estelí. 1994
- César Dolmus, Adelina Centeno
Fulvio Centeno
UNAN - León
Feb. - 1993/Feb.- 1994
- Martina Halussler, Alemana
Dalia Ortiz
UNAN - León
1993 - 1994
- Empresa Consultora
AGROCONSULT y BIOMASA
1994
- Dimensiones de la semilla de Tempate.
Variedad Cabo Verde y Nicaragua
- Trabajo evaluativo sobre datos básicos de
la semilla de Tempate
- Comportamiento de dos variedades de
Tempate *Jatropha curcas* L., en el pacífico
de Nicaragua
- Comportamiento de dos variedades de
Tempate *Jatropha curcas* L., en el pacífico
de Nicaragua
- Efectos de la hormona Benzil
Aminopurina sobre la floración del
Tempate
- Estudios preliminares para el
establecimiento de un sistema de Manejo
Integral de Plagas subclase Acari en
Tempate
- Establecimiento de ensayos de
micropropagación con sustratos nutritivos
de Muashige Skoog (1961) con
semisólido
- Banco de germoplasma, Región Norte
Central de Nicaragua
- Micropropagación *In Vitro*, del Tempate
- Efecto hormonal de benzilamina purina
(BAP), en la floración y fructificación de
Jatropha curcas L., en diferentes condiciones
- Propagación de *Jatropha curcas* L.
Tempate por injerto
- Análisis financiero y económico del
Proyecto Agroindustrial del cultivo de
Tempate

- María de la Cruz Siles H.,
Arnulfo Montoya
BIOMASA
1994 - 1995
- Obtención de plantas de Tempate, a raíz desnuda
- Francisco Montealegre
UNAN - León
1994 - 1995
- Síntomas de deficiencia nutricional y elementos limitantes en el cultivo de Tempate (*Jatropha curcas* L.)
- Fernando Altamirano, Lester Guerrero
UNAN - León
1993 - 1994
- Dinámica poblacional de ácaros, fitófagos y depredadores
- Cristoph Grimm, María de la Cruz Siles,
Arnulfo Montoya
BIOMASA
1994
- Prueba de 2 productos químicos en el control de chinches (Hemiptera), en plantaciones de *Jatropha curcas* L., en Mateare, Nicaragua
- Indiana Coronado, Martha Dávila
UNAN - León
1994 - 1995
- Influencia del Nitrógeno, Fósforo y Potasio, sobre los rendimientos del cultivo de Tempate
- Eva Gutierrez
UNI
1994 - 1995
- Evaluación técnica y agronómica del riego por goteo para el Tempate, en la Cooperativa "Juan de Dios Muñoz".
Telica - León
- Maritza Sánchez M., María Cruz
Siles H. Arnulfo Montoya
BIOMASA
1995
- Inhibición apical del cultivo de Tempate a través del Ester Metílico de aceite de Tempate (EMAT)
- Martha Vásques, José Munguía,
Cora Ma. Jiménez
UNAN - León, CENAPROVE
- Patogenicidad de *Beauveria bassiana* sobre *Pantomorus femoratus*
- Ricardo Rueda, Charles Aker,
Claudia Silva,
UNAN - León
1995
- Ecología genética y conservación de poblaciones naturales de *Jatropha* sp. en Nicaragua
- Modesto Gómez, René González,
Charles Aker
UNAN León
1995
- Efectos de diferentes herbicidas sobre el control de malezas en el cultivo del Tempate, *Jatropha curcas* L.
- Rolando Dolmuz B., Ricardo Rueda
UNAN - León
1994 - 1995
- Efectos de tres malezas leguminosas en la productividad de plantaciones comerciales de *Jatropha curcas* L. Tempate
-

- María Cruz Siles, Arnulfo Montoya
BIOMASA
1994 - 1995
- Rebeca Pastora, María Inés Dávila
UNAN - León
1995
- Concepción Narvaéz, Patricia Castrillo,
Carmén Marina Rizo
UNAN - León
1995
- Maritza Sánchez M., María de la
Cruz Siles H., Arnulfo Montoya
BIOMASA
1994
- Maritza Sánchez M., María Cruz Siles H.,
Arnulfo Montoya
BIOMASA
1994
- Charles Aker, Enilda Cano
UNAN - León
1995
- Empresa Nicaraguense de Petróleo
Gobierno de Austria
UNI. Enero 1995
- Maritza Sánchez M.
BIOMASA
1994 - 1995
- Maritza Sánchez M., Danilo Padilla
UNAN - León
BIOMASA
1994 - 1995
- Francisco Montealegre, María de la
Cruz Siles H., Dalia Ortiz,
Maritza Sánchez M.
UNAN - León. BIOMASA
- Arnulfo Montoya, Maritza Sánchez,
María Cruz Siles
BIOMASA
1995
- Prueba del Compost de Cáscara de
Tempate
- Efectos de la aplicación de productos que
comerciales que contengan BAP y ANA,
sobre la productividad del Tempate
- Umbral de daño económico para
plántulas de *Jatropha curcas* L., atacadas
por *Pantomorus femoratus*
- Establecimiento y manejo de viveros del
cultivo del Tempate
- Establecimiento y manejo de plantaciones
de Tempate
- Dinámica poblacional, nivel de daño
económico y control biológico de
Pachicorris torridus (Hemiptera:
Scutelleridae)
- Proyecto Tempate. Producción de Ester
Metílico de Tempate como Sustituo del
Combustible Diesel
- Estudio de *Lagocheirus undatus* en la
Región II
- Métodos de control y manejo de las
enfermedades del Tempate
- Propagación vegetativa del Tempate por
injerto
- Efecto de poda en el cultivo de Tempate,
en las localidades Mateare, UNI Central
-

Eduarzo Zamora S., María de la Cruz Siles BIOMASA 1994	Efecto del extracto acuoso de hojas de Marango sobre el crecimiento y desarrollo del Tempate (<i>Jatropha curcas</i> L.)
Anabell Reyes, José René González, Modesto Gómez, Charles Aker UNAN - León 1993 - 1995	Ensayos regionales de variedad y métodos de siembra
José Munguía UNAN - León 1993	Taxonomía de insectos asociados al Tempate
Anabell Reyes, René Gómez UNAN - León 1993	Dinámica poblacional de insecto en los ensayos regionales
Indiana Coronado, Martha Dávila UNAN - León 1994 - 1995	Fertilización Cultivo de Tempate
Marlyng Buitrago S. BIOMASA 1991 - 1992	Datos de consolidación de las semillas de Tempate. Variedad Cabo Verde y Nicaragua
Marlyng Buitrago S. BIOMASA 1990 - 1991	Datos de consolidación de las semillas de Tempate. Variedad Cabo Verde y Nicaragua
Marlyng Buitrago S. BIOMASA 1994	Porcentajes de semillas seleccionadas para la siembra la producción de aceite de Tempate
Luis Sonzini Meroi, Marlyng Buitrago S. BIOMASA 1995	Informes sobre resultados de ensayos de extracción de aceite
Sixto Rómulo Vega Urroz, Sara María Flores López UNI 1995	Optimización del proceso de extracción de aceite y análisis de la posibilidad de realización simultánea con el proceso de transesterificación, para la semilla de Tempate

¹ Institute codes: UNAN = Universidad Nacional Autónoma de Nicaragua; UCA = Universidad Centroamericana; BIOMASA = Proyecto Biomasa; E.A.G. Estelí = Escuela de Agricultura y Ganadería de Estelí; CENAPROVE = Centro Nacional de Protección Vegetal.